

CLIP top BLUMOTION



CLIP top BLUMOTION

Premium concealed hinges with integrated BLUMOTION

blum.com

Perfecting motion  **blum**[®]

Elegant design and superior function

Get to know the advantages of integrated BLUMOTION and discover the possibilities of the new CLIP top BLUMOTION hinge. Inspire your customers: Perfecting motion for doors, for the lifetime of the cabinet.

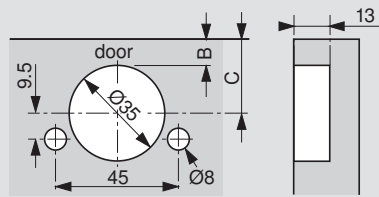


Contents

8	General specifications
10	110° hinges
12	110° + hinges
14	95° thick door hinges
15	Narrow aluminum door hinges
16	Blind corner hinges
18	155° Zero-protrusion hinges
21	Angled hinges
32	CLIP mounting plates
36	Hinge accessories
38	Assembly aids
42	Part number index

Quick reference

Hinge cup centerpoint



C = Cup centerpoint

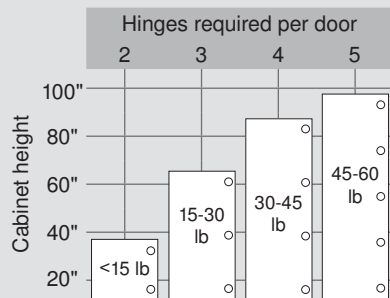
20.5	21.5	22.5	23.5	24.5	25.5
13/16"	27/32"	7/8"	15/16"	31/32"	1"
3	4	5	6	7	8

B = Bore distance

Conversion chart

mm	inch	
1	1/32	.031
1.5	1/16	.063
2	3/32	.094
3	1/8	.125
4	5/32	.156
5	3/16	.188
5.5	7/32	.219
6	1/4	.25
7	9/32	.281
8	5/16	.313
9	11/32	.344
9.5	3/8	.375
10	13/32	.406
11	7/16	.438
12	15/32	.469
13	1/2	.5
13.5	17/32	.531
14	9/16	.563
15	19/32	.594
16	5/8	.625
17	21/32	.656
17.5	11/16	.688
18	23/32	.719
19	3/4	.75
20	25/32	.781
20.5	13/16	.813
21	27/32	.844
22	7/8	.875
23	29/32	.906
24	15/16	.938
24.5	31/32	.969
25.4	1	1

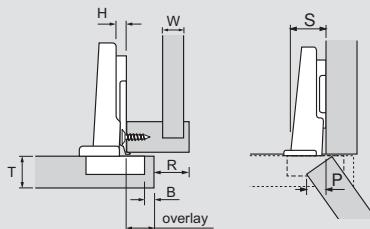
Hinges per door



This chart can serve as a guide for determining the number of hinges per door. Note that door weight can also determine the number of hinges required.

NOTE: The distance between the top and bottom hinges must be greater than the width of the door

Hinge abbreviation key



B	=	Boring distance
H	=	Plate height
OL	=	Door overlay
P	=	Door protrusion
R	=	Reveal
S	=	Side arm protrusion
T	=	Door thickness
W	=	Side panel width
FD	=	Fixed distance

Fixed distance (FD)

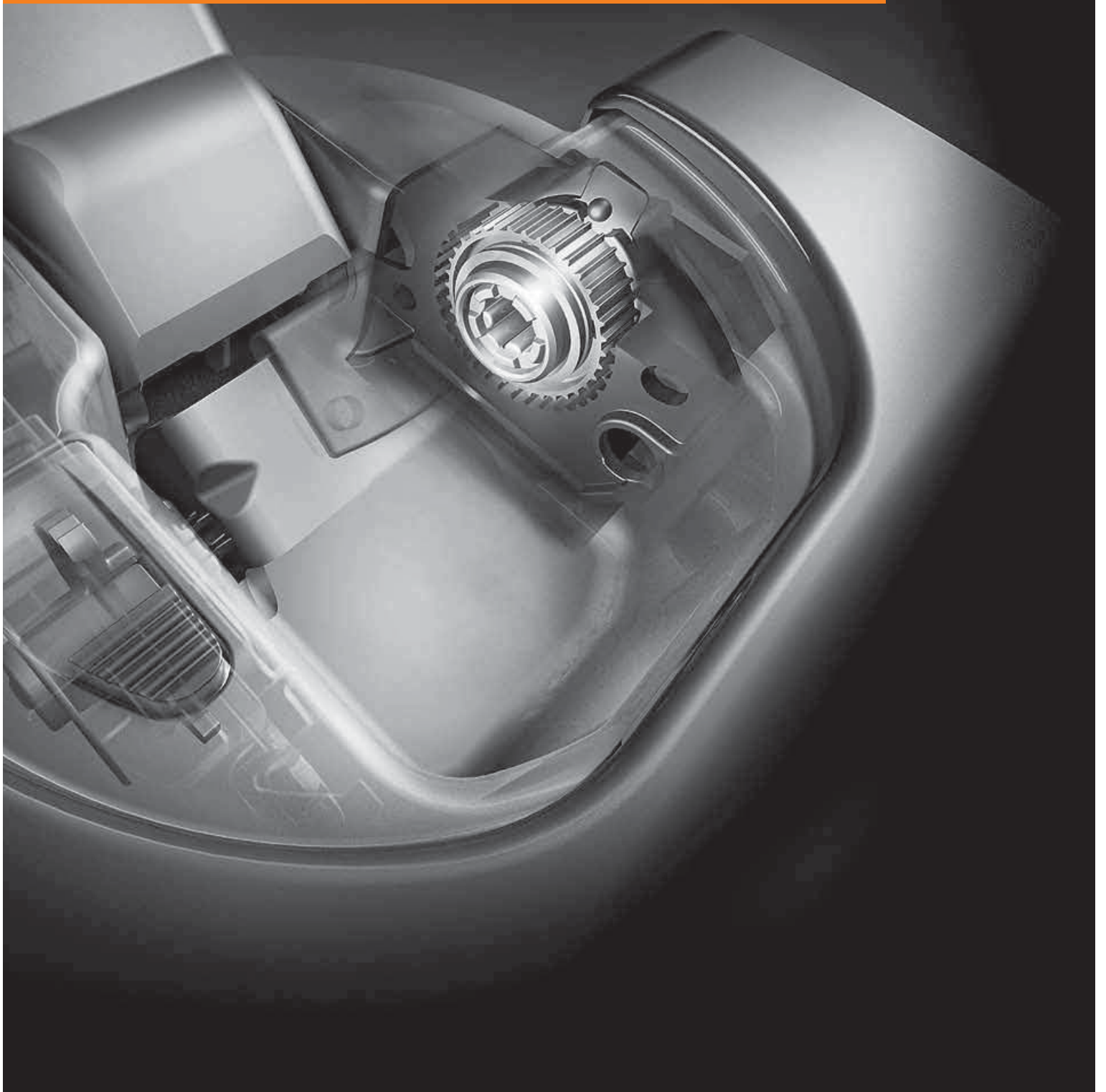
The distance that the cup overlays the cabinet side panel when a hinge is attached to a 0 mm mounting plate. This is used to calculate hinge overlay with the formula $X + B \text{ minus } H = OL$ (Fixed distance + boring distance minus hinge height = overlay)



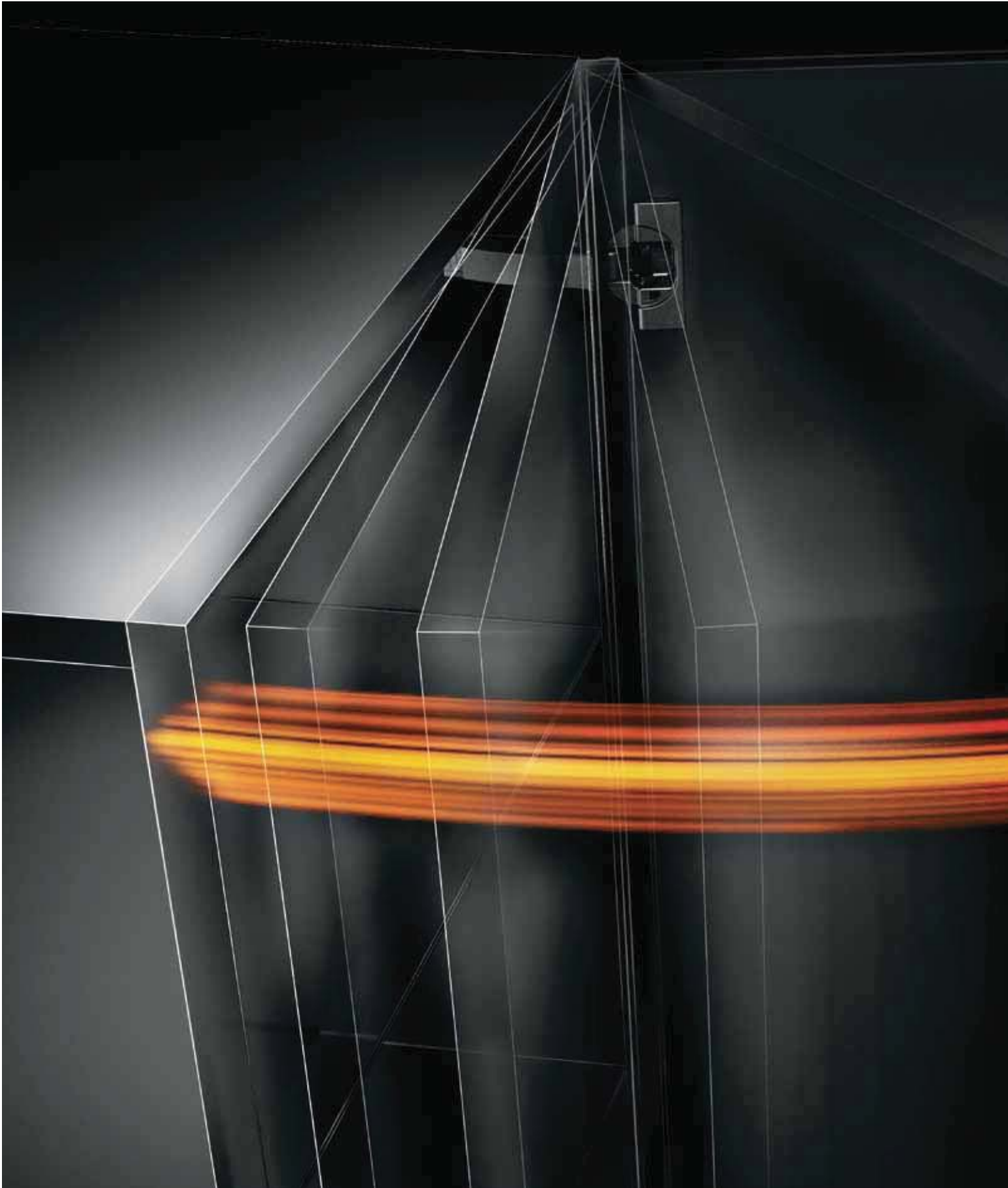
Innovative technology



concentrated into a small space



CLIP top BLUMOTION sets a new benchmark





Silent and effortless, that's how cabinet doors close with CLIP top BLUMOTION hinges — regardless of the weight or closing speed. The BLUMOTION soft close mechanism is integrated in the hinge cup, and continues to provide the quality of motion you have come to expect from Blum hardware.

With CLIP top BLUMOTION, you can now use thicker doors — up to 1" depending on the application. The new geometry ensures that the door does not make contact with the cabinet face even with smaller door gaps.



BLUMOTION deactivation option

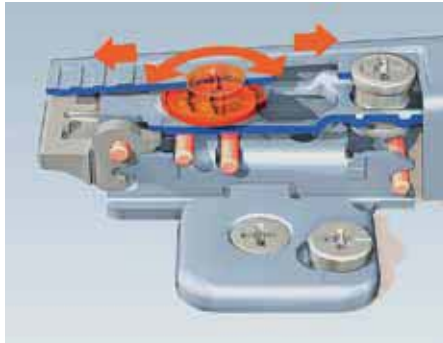
The BLUMOTION function can easily be deactivated on one of the hinges, giving small or light doors the same high quality of motion.

Simply slide the switch on the hinge cup, then close the door once. This creates a quicker, but still silent, close. BLUMOTION can be reactivated the same way.

Additional advantages of CLIP top BLUMOTION



CLIP top BLUMOTION is extremely user friendly. This provides many advantages for assembly and adjustment.



CLIP

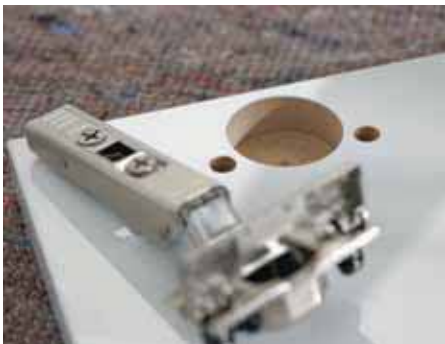
The tried and tested CLIP mechanism offers simple, tool-free hinge assembly. The industry standard for tool-free attachment since 1985.

CLIP top

Like other CLIP top hinges, CLIP top BLUMOTION enables easy three-dimensional adjustment with Blum's spiral tech depth adjustment.

CLIP top BLUMOTION

Because the BLUMOTION function is now integrated into the hinge cup, additional assembly processes are no longer necessary after adjustment is complete.



Boring pattern

The boring pattern for the hinge cup remains unchanged for CLIP top BLUMOTION, however, a 13 mm boring depth is required for all three holes (35 mm & 8 mm).

INSERTA

The new INSERTA mechanism enables tool-free attachment of the hinge to the door. When the insertion lever is pressed down, the dowels expand to hold the hinge in place.

Mounting plates

CLIP top BLUMOTION works with all current CLIP mounting plates so you can start using this new hinge right away with little change to production.



Hinge planning tools

Blum has downloadable Excel® spreadsheets that help determine the hinge that is right for your application. Available at blum.com/us/planning

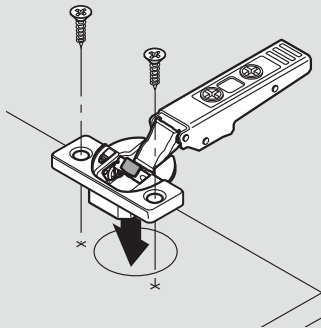


General specifications

Hinge-to-door attachment

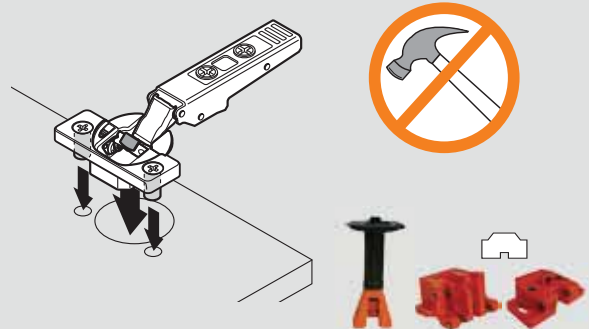
Screw-on

Use #6 wood screws



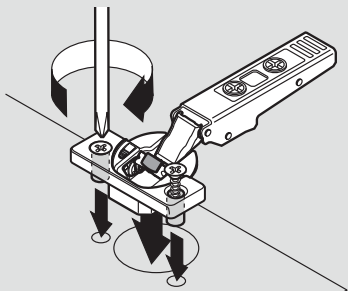
Press-in

Pre-attached Ø8 dowels installed with Blum knock-in tool or MINIPRESS with insertion rams



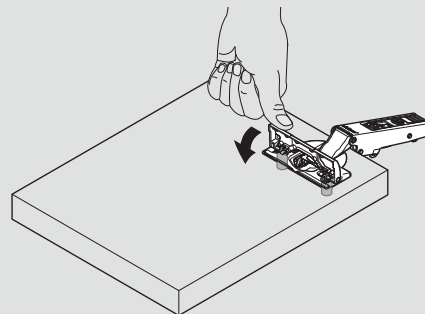
EXPANDO

Pre-attached expanding Ø8 mm dowels



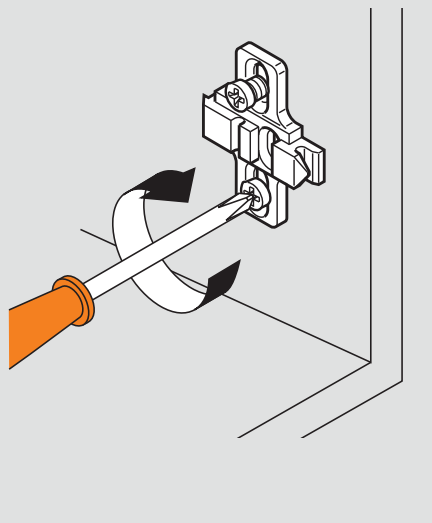
INSERTA

Tool-free attachment with INSERTA expanding Ø8 mm dowels



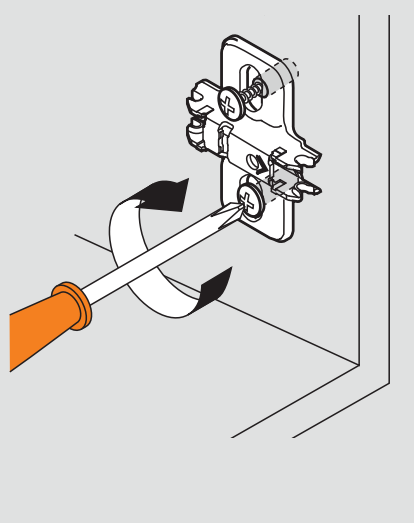
Mounting plate-to-cabinet

Screw-on



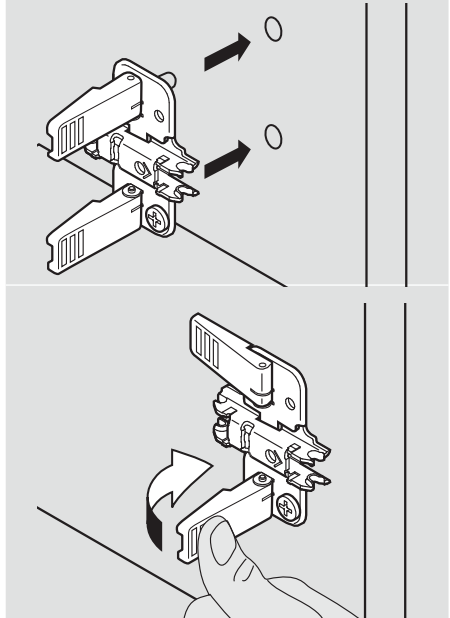
EXPANDO

Pre-attached expanding Ø5 mm dowels



INSERTA

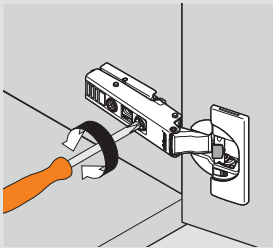
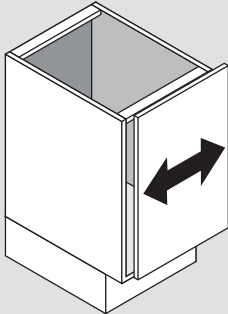
Tool-free attachment with INSERTA expanding Ø5 mm dowels



Three-dimensional adjustment

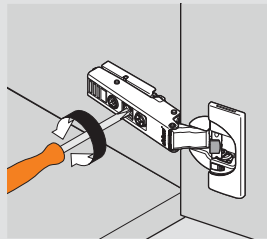
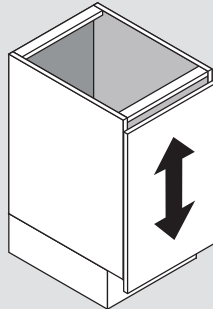
Side adjustment

Rotate front screw to increase or decrease door overlay (± 2 mm).



Height adjustment

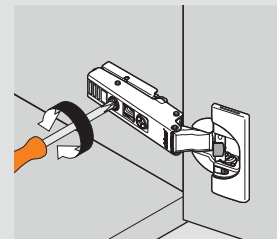
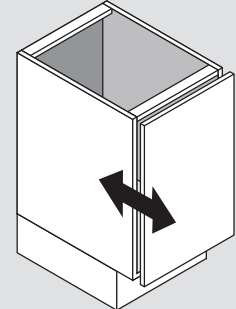
Rotate cam screw on mounting plate to adjust door position (± 2 mm).



On non-cam mounting plates, loosen screws, adjust door and retighten screws.

Depth adjustment

Rotate rear spiral tech cam screw to adjust door gap (+3 mm, -2 mm).

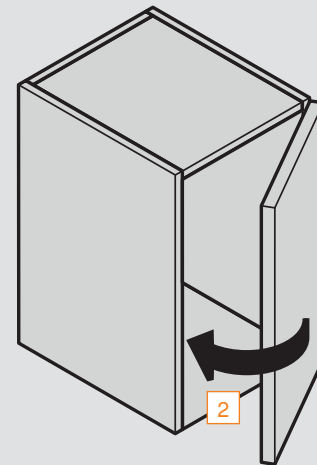
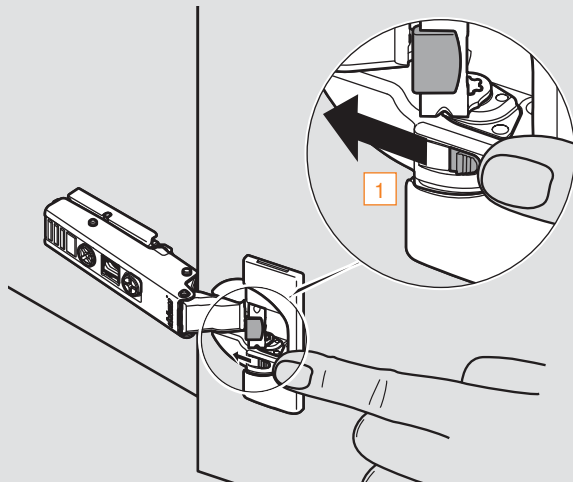


BLUMOTION deactivation

Deactivation switch on hinge cup

For small or light doors, the BLUMOTION can be deactivated on one of the hinges.

Door must be closed once for the deactivation to be complete. To reactivate, move switch back to original position.



Temperature information

CLIP top BLUMOTION is designed to be used at temperatures between 65° and 85° F. Lower or higher temperatures will not cause damage to the hinge, however they will affect the closing speed. Once the temperature returns to the suggested range the hinge will return to its optimal closing action.

CLIP top BLUMOTION 110° hinges

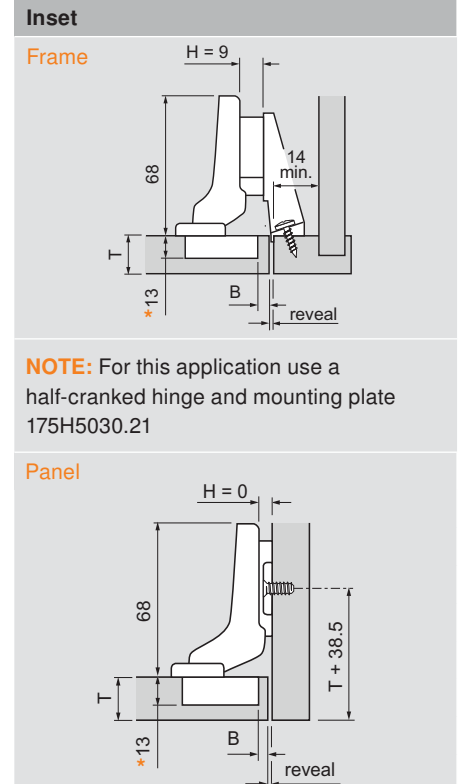
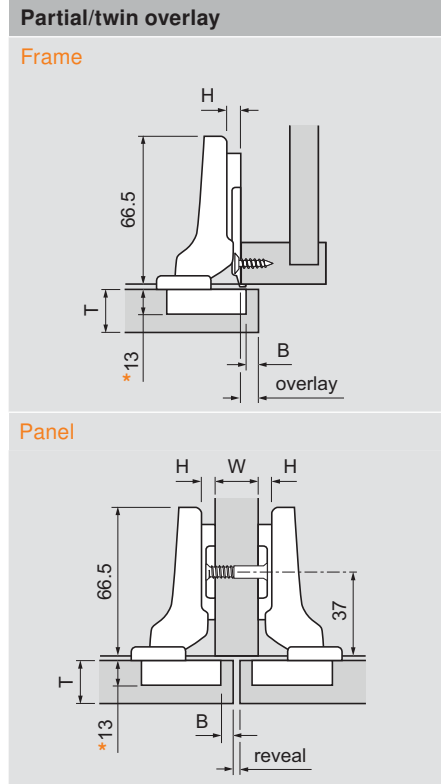
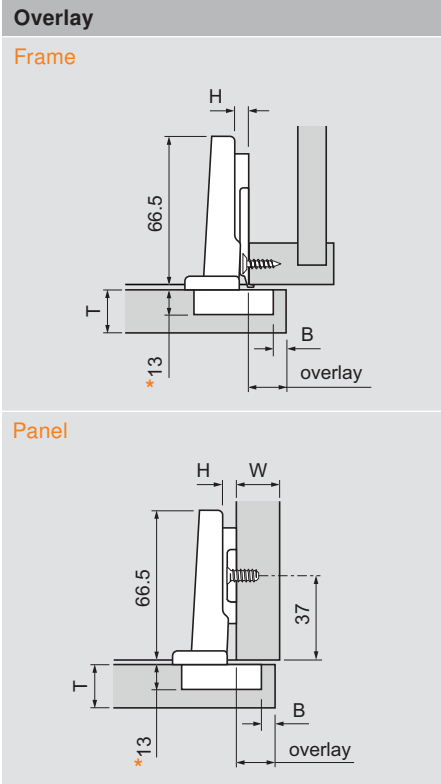


Features

- BLUMOTION soft close integrated into the hinge cup
- Deactivation switch for small/light doors
- New geometry for door thicknesses up to **26 (1")**
- New INSERTA design
- Boring distance range 3 mm to 7 mm
- Compatible with existing CLIP mounting plates and hinge arm cover caps
- Press-in hinges must be inserted with knock-in tool or insertion rams

Minimum reveal table					
3	0.5	1.0	1.8	2.7	4.3
4	0.5	1.0	1.7	2.5	3.8
5	0.5	0.9	1.7	2.4	3.4
6	0.5	0.9	1.6	2.3	3.2
7	0.5	0.9	1.6	2.2	3.0
B = boring dist.	16	19	22	24	26
T = door thickness					

Thickness greater than 26 trial app. recommended



NOTE: For this application use a half-cranked hinge and mounting plate 175H5030.21

* All 35 mm and 8 mm holes must be a minimum of 13 mm deep

H	Overlay					P	S
0	14	15	16	17	18	12	21.5
3	11	12	13	14	15	15	24.5
4.5	9.5	10.5	11.5	12.5	13.5	16.5	26
6	8	9	10	11	12	18	27.5
9	5	6	7	8	9	21	30.5
	3	4	5	6	7	Fixed distance = 11	
	B = boring distance						

NOTE: 4.5 plate is only for use in frame cabinets, 9 plate is only for panel cabinets


H	Overlay					P	S
0	4.5	5.5	6.5	7.5	8.5	21.5	31
	3	4	5	6	7	Fixed distance = 11	
	B = boring distance						


H	Reveal					W	P	S
	7	5	3	1	—	16		
0	10	8	6	4	2	19	21.5	31
	13	11	9	7	5	22		
	3	4	5	6	7	B = boring distance		


H	Reveal					P	S	X
0	4	3	2	1	—	30	39.5	-7
9	4.5	3.5	2.5	1.5	0.5	30.5	40	1.5
	3	4	5	6	7	B = boring distance		

Abbreviations

H	=	Plate height
P	=	Door protrusion
S	=	Side arm protrusion
W	=	Side panel width

Straight-arm	Self close
Screw-on	71B3550
Press-in 	71B3580
EXPANDO	71B358E
INSERTA	71B3590

Half-cranked (9.5 mm)	Self close
Screw-on	71B3650
Press-in 	71B3680
INSERTA	71B3690

Full-cranked (18 mm)	Self close
Screw-on	71B3750
Press-in 	71B3780
INSERTA	71B3790

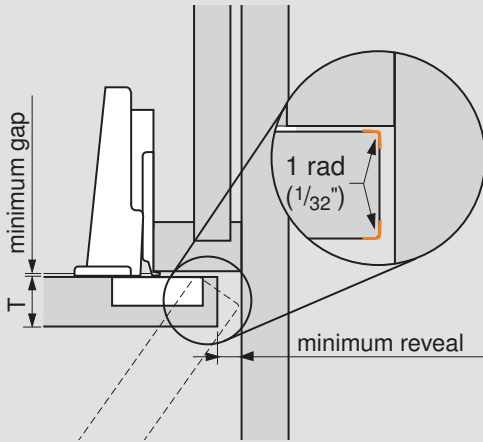
New geometry for thick door applications

Minimum reveals increase with door thickness. The following applications show common examples of necessary reveal and door gap for each door thickness.

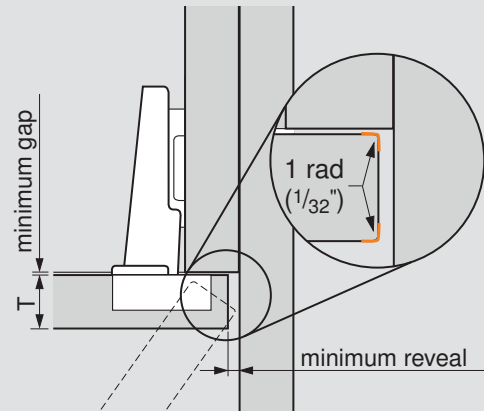
The factory setting for the door gap (distance between the back of door and front of side panel/frame) is 1.5 mm. For full opening angle without contacting the side panel or frame, the gap behind the door and the minimum reveal must be adjusted according to the table below.

NOTE: All dimensions based on 1 mm door radius

Frame application



Panel application



3/4" thick door		
Minimum reveal	B Bore	Minimum gap behind door
1.0	3	1.5
1.0	4	1.5
.9	5	1.5
.9	6	1.5
.9	7	1.5

7/8" thick door		
Minimum reveal	B Bore	Minimum gap behind door
1.8	3	1.5
1.7	4	1.5
1.7	5	1.5
1.6	6	1.5
1.6	7	1.5

1" thick door		
Minimum reveal	B Bore	Minimum gap behind door *
4.3	3	1.5
3.8	4	1.5
3.4	5	2.2
3.2	6	3.2
3.0	7	4.2

* Factory setting is 1.5, may require adjustment

CLIP top BLUMOTION 110°+ hinges

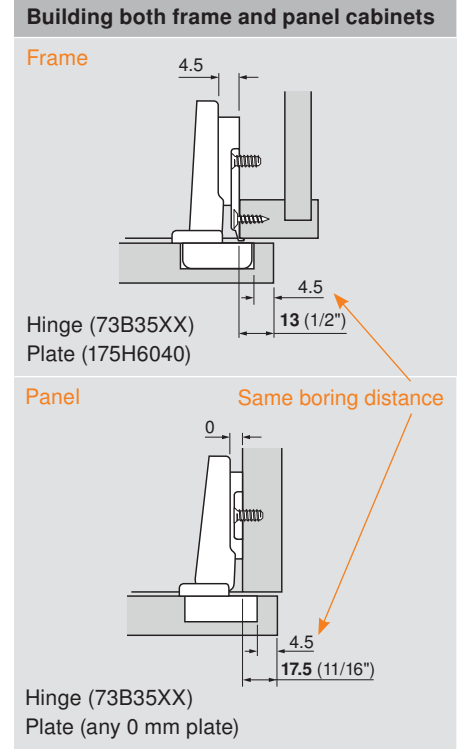
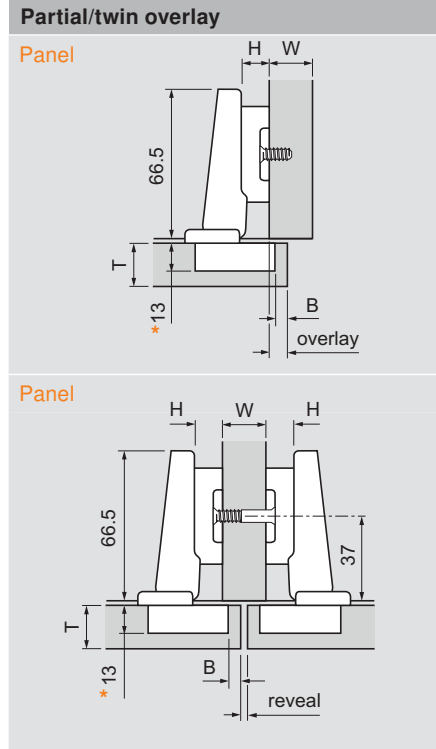
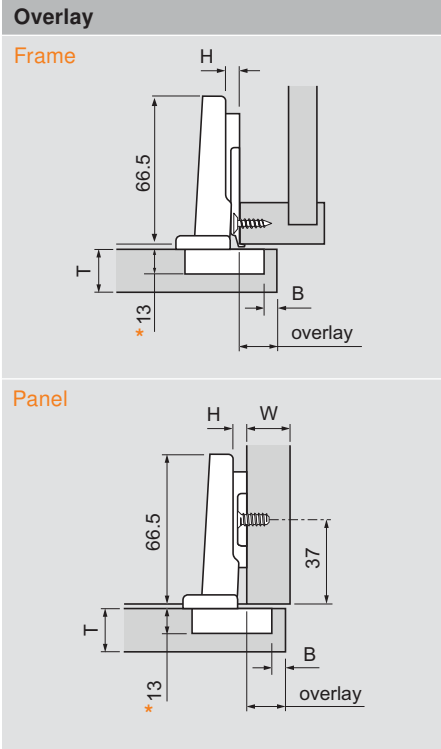


Features

- BLUMOTION soft close integrated into the hinge cup
- Deactivation switch for small/light doors
- New geometry for door thicknesses up to 26 (1")
- New INSERTA design
- Boring distance range 3 mm to 7 mm
- For door overlays up to 22 mm
- Compatible with existing CLIP mounting plates and hinge arm cover caps
- Press-in hinges must be inserted with knock-in tool or insertion rams

Minimum reveal table					
3	0.5	1.0	1.8	2.7	4.3
4	0.5	1.0	1.7	2.5	3.8
4.5	0.5	1.0	1.7	2.5	3.6
5	0.5	0.9	1.7	2.4	3.4
6	0.5	0.9	1.6	2.3	3.2
7	0.5	0.9	1.6	2.2	3.0
B = boring dist.	16	19	22	24	26
T = door thickness					

Thickness greater than 26 trial app. recommended



* All 35 mm and 8 mm holes must be a minimum of 13 mm deep

H	Overlay						P	S
0	16	17	17.5	18	19	20	10	20
3	13	14	14.5	15	16	17	13	23
4.5	11.5	12.5	13	13.5	14.5	15.5	14.5	24.5
6	10	11	11.5	12	13	14	16	26
9	7	8	8.5	9	10	11	19	29
	3	4	4.5	5	6	7	Fixed distance = 13	
	B = boring distance							

NOTE: 4.5 plate is only for use in frame cabinets, 9 plate is only for panel cabinets

H	Overlay							P	S
9	7	8	8.5	9	10	11	19	29	
	3	4	4.5	5	6	7	Fixed distance = 13		
	B = boring distance								

H	Reveal						W	P	S
	2	—	—	—	—	—	16		
9	5	3	2	—	—	—	19	19	29
	8	6	5	4	—	—	22		
	3	4	4.5	5	6	7			
	B = boring distance								


The most common overlays for frame and panel cabinets can be achieved by using the same machine setting for hinge cup boring.


Bore all doors at 4.5 mm to achieve:

- 13 (1/2") overlay on frame cabinets
- 17.5 (11/16") overlay on panel cabinets

Advantages:

- One machine setting for boring all doors
- Same hinge used for both applications

Straight-arm	Self close
Screw-on	73B3550
Press-in 	73B3580
EXPANDO	73B358E
INSERTA	73B3590

Straight-arm	Self close
Screw-on	73B3550
Press-in 	73B3580
EXPANDO	73B358E
INSERTA	73B3590

Abbreviations	
H	= Plate height
P	= Door protrusion
S	= Side arm protrusion
W	= Side panel width

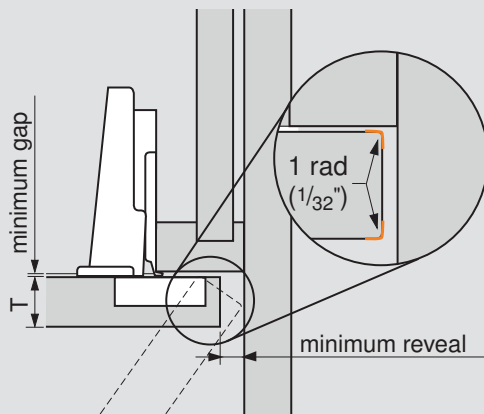
New geometry for thick door applications

Minimum reveals increase with door thickness. The following applications show common examples of necessary reveal and door gap for each door thickness.

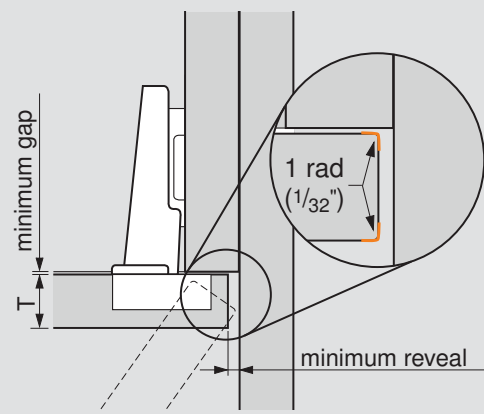
The factory setting for the door gap (distance between the back of door and front of side panel/frame) is 1.5 mm. For full opening angle without contacting the side panel or frame, the gap behind the door and the minimum reveal must be adjusted according to the table below.

NOTE: All dimensions based on 1 mm door radius

Frame application



Panel application



3/4" thick door		
Minimum reveal	B Bore	Minimum gap behind door
1.0	3	1.5
1.0	4	1.5
.9	4.5	1.5
.9	5	1.5
.9	6	1.5
.9	7	1.5

7/8" thick door		
Minimum reveal	B Bore	Minimum gap behind door
1.8	3	1.5
1.7	4	1.5
1.7	4.5	1.5
1.7	5	1.5
1.6	6	1.5
1.6	7	1.5

1" thick door		
Minimum reveal	B Bore	Minimum gap behind door *
4.3	3	1.5
3.8	4	1.5
3.6	4.5	2.0
3.4	5	2.2
3.2	6	3.2
3.0	7	4.2

* Factory setting is 1.5, may require adjustment

CLIP top BLUMOTION 95° thick door hinges

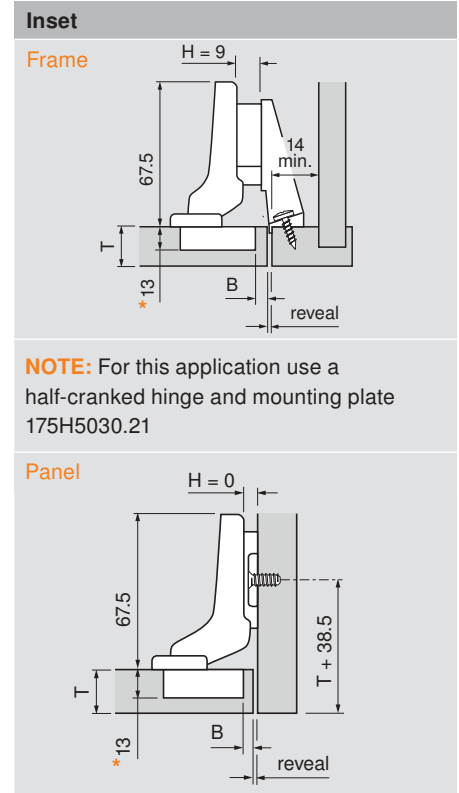
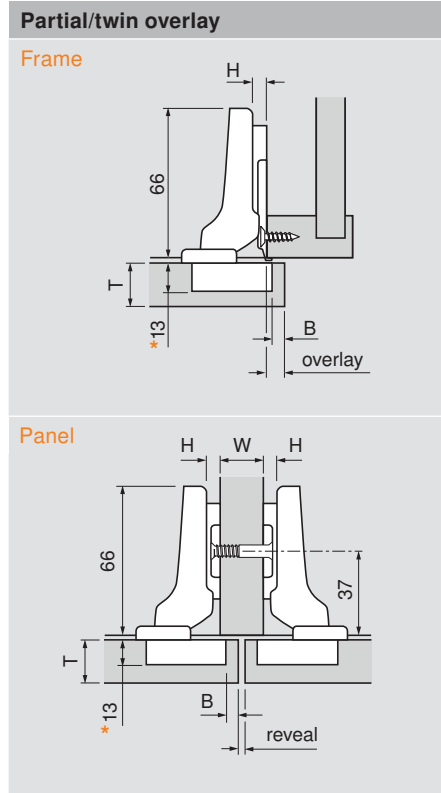
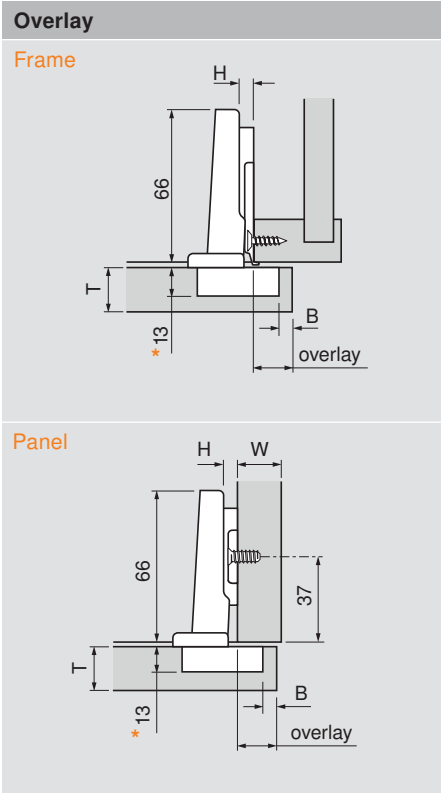


Features

- BLUMOTION soft close integrated into the hinge cup
- Deactivation switch for small/light doors
- For door thicknesses up to **30** (1-3/16")
- New INSERTA design
- Boring distance range 3 mm to 7 mm
- Compatible with existing CLIP mounting plates and hinge arm cover caps
- Press-in hinges must be inserted with knock-in tool or insertion rams

Minimum reveal table							
3	0.4	0.8	1.0	1.5	1.9	2.8	3.6
4	0.4	0.7	1.0	1.4	1.8	2.5	3.1
5	0.4	0.7	1.0	1.4	1.8	2.3	2.7
6	0.4	0.7	1.0	1.4	1.8	2.2	2.5
7	0.4	0.7	0.9	1.4	1.7	2.1	2.4
B = boring dist.	19	22	24	26	28	29	30
T = door thickness							

Thickness greater than 30 trial app. recommended



NOTE: For this application use a half-cranked hinge and mounting plate 175H5030.21

* All 35 mm and 8 mm holes must be a minimum of 13 mm deep

H	Overlay					P	S
0	14	15	16	17	18	14.5	22
3	11	12	13	14	15	17.5	25
4.5	9.5	10.5	11.5	12.5	13.5	19	26.5
6	8	9	10	11	12	20.5	28
9	5	6	7	8	9	23.5	31
	3	4	5	6	7	Fixed distance = 11	
	B = boring distance						

NOTE: 4.5 plate is only for use in frame cabinets, 9 plate is only for panel cabinets

H	Overlay					P	S
0	4.5	5.5	6.5	7.5	8.5	24	31
	3	4	5	6	7	Fixed distance = 1.5	
	B = boring distance						

H	Reveal					W	P	S
0	7	5	3	1	—	16		
	10	8	6	4	2	19	24	31
	13	11	9	7	5	22		
	3	4	5	6	7	B = boring distance		

H	Reveal					P	S	X
0	4	3	2	1	—	32.5	40	-7
9	4.5	3.5	2.5	1.5	0.5	33	40.5	1.5
	3	4	5	6	7	B = boring distance		

Abbreviations

H	=	Plate height
P	=	Door protrusion
S	=	Side arm protrusion
W	=	Side panel width

Straight-arm	Self close
Screw-on	71B9550
Press-in	71B9580
INSERTA	71B9590

Half-cranked (9.5 mm)	Self close
Screw-on	71B9650
Press-in	71B9680
INSERTA	71B9690

Full-cranked (18 mm)	Self close
Screw-on	71B9750
Press-in	71B9780
INSERTA	71B9790

CLIP top BLUMOTION 95° narrow aluminum door hinges



Features

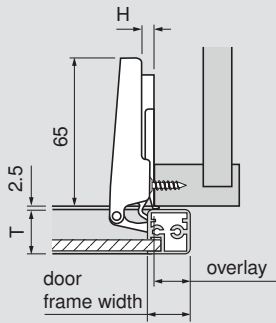
- BLUMOTION soft close integrated into the hinge cup
- Deactivation switch for small/light doors
- Compatible with existing CLIP mounting plates and hinge arm cover caps

Minimum reveal table					
18	0.2	0.3	0.4	0.6	0.7
19	0.2	0.3	0.4	0.6	0.7
20	0.2	0.3	0.4	0.5	0.7
21	0.2	0.3	0.4	0.5	0.7
22	0.2	0.3	0.4	0.5	0.7
Door frame width	18	19	20	21	22
	T = door thickness				

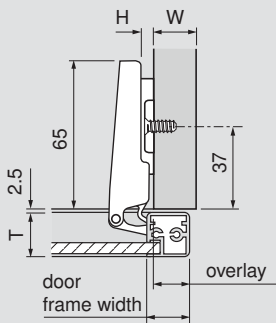
Thickness greater than 22 trial app. recommended

Overlay

Frame

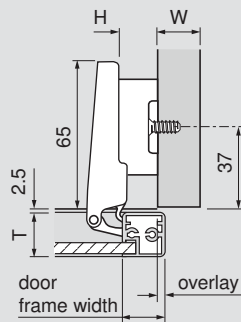


Panel

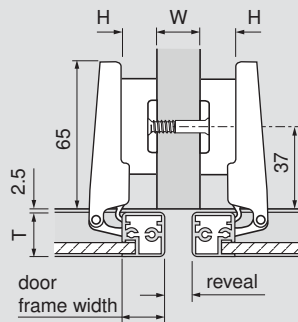


Partial/twin overlay

Panel

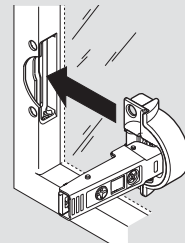


Panel

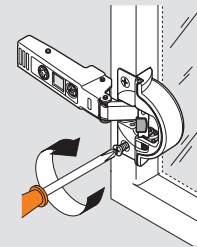


Installation

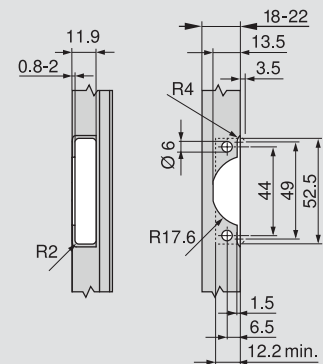
Attach cup adapter to the hinge and insert into machined openings



Attach using aluminum screws provided with hinges



Aluminum door preparation



H	Overlay	P	S
0	16	13.5	22
3	13	16.5	25
4.5	11.5	18	26.5
6	10	19.5	28
9	7	22.5	31
	B = fixed		

NOTE: 4.5 plate is only for use in frame cabinets, 9 plate is only for panel cabinets

H	Overlay	P	S
9	7	23	31
	B = fixed		

H	Reveal	W	P	S
9	2	16	23	31
	5	19		
	B = fixed			

Abbreviations

H	=	Plate height
P	=	Door protrusion
S	=	Side arm protrusion
W	=	Side panel width

Straight-arm	Self close
Screw-on	71B950A

Straight-arm	Self close
Screw-on	71B950A

CLIP top BLUMOTION 95° inset blind corner hinges



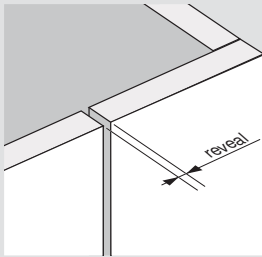
Features

- BLUMOTION soft close integrated into the hinge cup
- Deactivation switch for small/light doors
- New INSERTA design
- Boring distance range 3 mm to 7 mm
- Compatible with existing CLIP mounting plates and hinge arm cover caps
- Press-in hinges must be inserted with knock-in tool or insertion rams

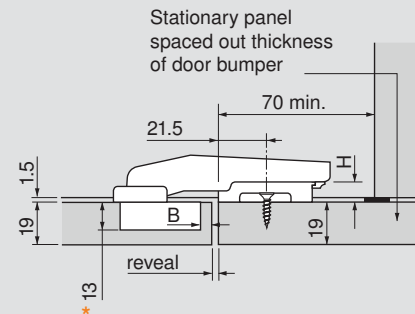
Minimum reveal table						
3	0.1	0.3	0.4	0.5	0.9	1.3
4	0.1	0.3	0.4	0.5	0.9	1.3
5	0.1	0.4	0.4	0.5	0.9	1.3
6	0.1	0.3	0.4	0.5	0.9	1.2
7	0.1	0.3	0.4	0.5	0.9	1.2
B = boring dist.	16	18	19	20	22	24
T = door thickness						

Thickness greater than 24 trial app. recommended

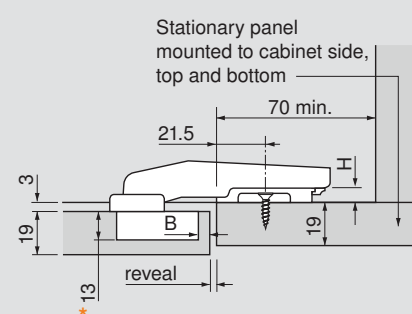
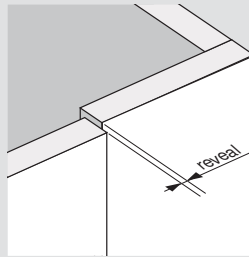
Flush door applications



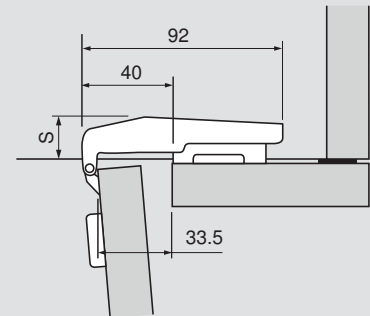
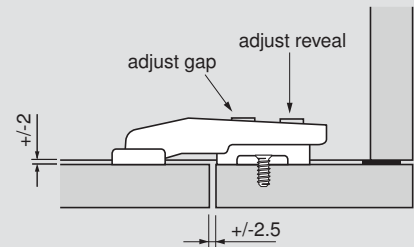
Back of door is flush with stationary panel



Offset door applications



Adjustments and clearances



* All 35 mm and 8 mm holes must be a minimum of 13 mm deep

H	Reveal					P	S
3	5	4	3	2	1	33.5	21
	3	4	5	6	7		
	B = boring distance						

H	Reveal					P	S
0	5	4	3	2	1	33.5	21
	3	4	5	6	7		
	B = boring distance						

Abbreviations

H	=	Plate height
P	=	Door protrusion
S	=	Side arm protrusion

Flush door	Self close
Screw-on	79B9550
Press-in	79B9580
INSERTA	79B9590

Offset door	Self close
Screw-on	79B9550
Press-in	79B9580
INSERTA	79B9590



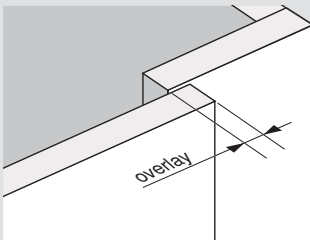
Features

- BLUMOTION soft close integrated into the hinge cup
- Deactivation switch for small/light doors
- Boring distance range 3 mm to 7 mm
- Compatible with existing CLIP mounting plates and hinge arm cover caps
- Press-in hinges must be inserted with knock-in tool or insertion rams

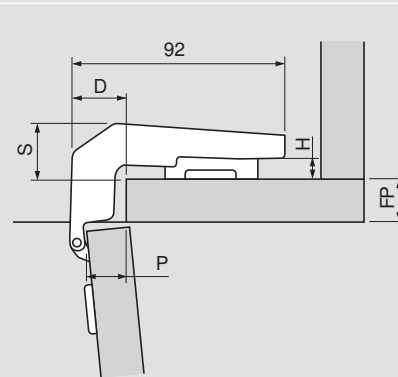
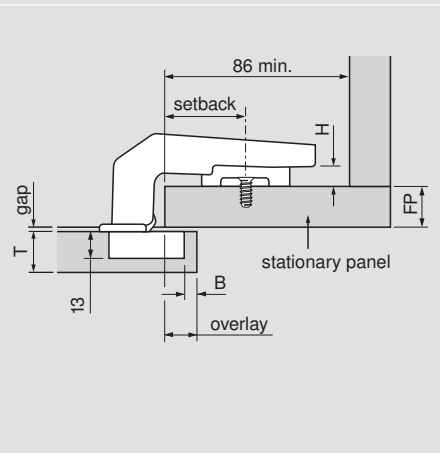
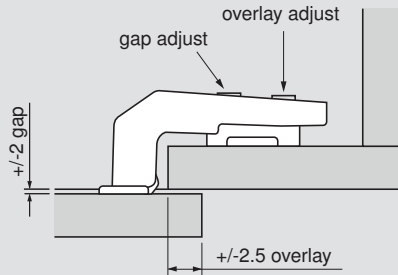
Minimum reveal table						
3	0.1	0.3	0.4	0.5	0.9	1.3
4	0.1	0.3	0.4	0.5	0.9	1.3
5	0.1	0.3	0.4	0.5	0.9	1.3
6	0.1	0.3	0.4	0.5	0.9	1.2
7	0.1	0.3	0.4	0.5	0.9	1.2
B = bore dist.	16	18	19	20	22	24
T = door thickness						

Thickness greater than 24 trial app. recommended

Overlay application



Adjustments and clearances



NOTE: Door gap can be adjusted +/- 2 mm

Setback	Overlay					P	D
27	2	3	4	5	6	7	32
32	7	8	9	10	11	12	27
37	12	13	14	15	16	17	22
	3	4	5	6	7	Fixed distance = 9	
	B = boring distance						

NOTE: Door overlay varies depending on the setback position of the mounting plate. Use the table to select the desired overlay and cross-reference to the plate setback and bore distance.

H	Gap			S
0	7	4	1	21
3	4	1	—	24
6	1	—	—	27
	16	19	22	
	FP = front panel thickness			

NOTE: The door gap varies depending on the thickness of the stationary panel and the height of the mounting plate. Use the table to cross-reference the plate height based on the front panel thickness and door gap.

Overlay blind corner	Self close
Press-in	79B9980

Abbreviations

FP	= Front panel thickness
D	= Depth
H	= Plate height
P	= Door protrusion
S	= Side arm protrusion
T	= Door thickness

CLIP top 155° zero protrusion hinges



Features

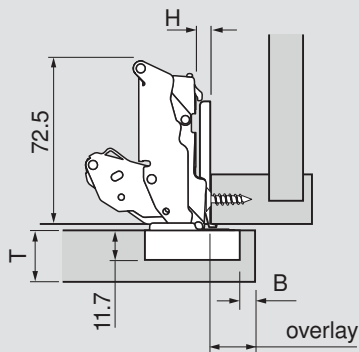
- 155° opening angle
- For use in cabinets with interior roll-outs
- Three-dimensional adjustment
- Available with INSERTA tool-free attachment
- BLUMOTION is available as add on piece
- All metal hinge, nickel-plated

Minimum reveal table						
3	0	0	0	0	0	0
4	0	0	0	0	0	0
5	0	0	0	0	0	0
6	0	0	0	0	0	0
7	0	0	0	0	0	0
8	0	0	0	0	0	0
B = boring dist.	16	18	19	20	22	24
T = door thickness						

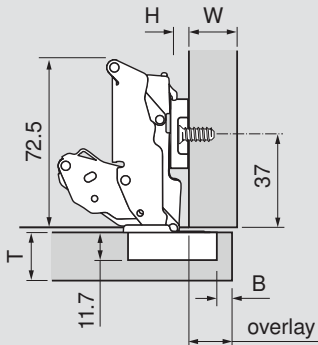
Thickness greater than 24, please see page 19.

Overlay

Frame

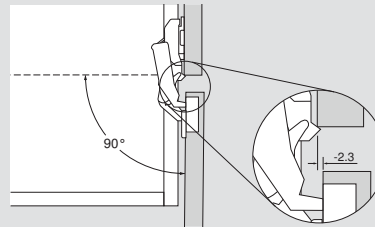


Panel



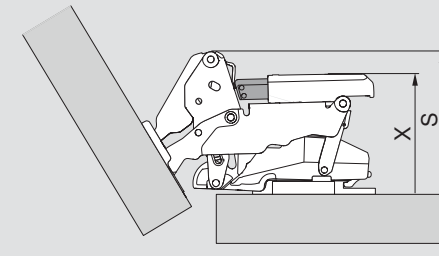
Door protrusion

At 90° opening, using 0 mm plate, the door will have -2.3 mm protrusion regardless of boring distance. Use side adjustment to increase or decrease door protrusion.



NOTE: Use of 0 mm or 3 mm is recommended for zero protrusion

BLUMOTION for 155° hinges



- CLIP top 155° — straight-arm
- CLIP top 155° — half-cranked

Part no.

973A7000

Angle restriction clip

- Reduces opening angle to 110°
- For use with 155° hinges only
- Gray nylon



Part no.

110° restriction clip **70T7503N**

Angle restriction clip

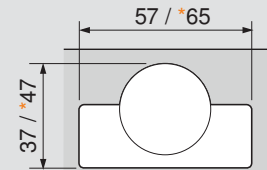
- Reduces opening angle to 92°
- For use with 155° hinges only
- Gray nylon



Part no.

92° restriction clip **70T7503N09**

Hinge cup dimensions



*INSERTA

Abbreviations

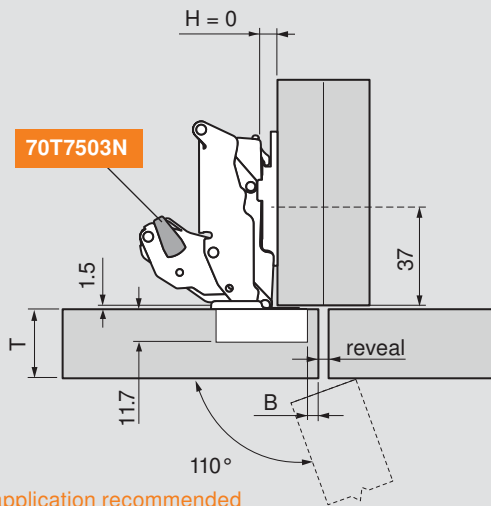
H	= Plate height
P	= Door protrusion
S	= Side arm protrusion
T	= Door thickness
W	= Side panel width

H	Overlay								P	S
0	14	15	16	17	18	19	-2.3	61		
3	11	12	13	14	15	16	0.7	64		
	3	4	5	6	7	8	Fixed distance = 11			
B = boring distance										

Straight-arm	Self close
Screw-on	71T7500N
Press-in	71T7530N
INSERTA	71T7540N



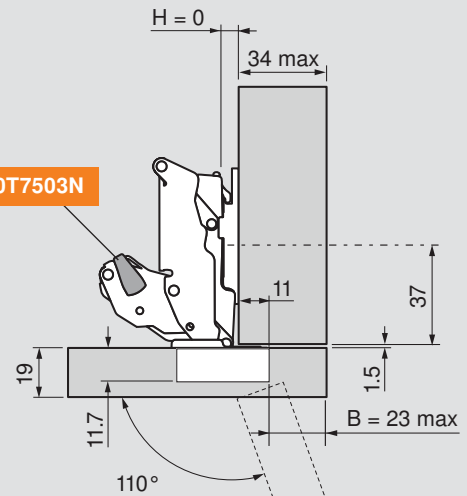
Maximum door thickness



Trial application recommended

NOTE: For thick door applications, you must bore at the specified boring distance listed in the chart below

Maximum door overlay



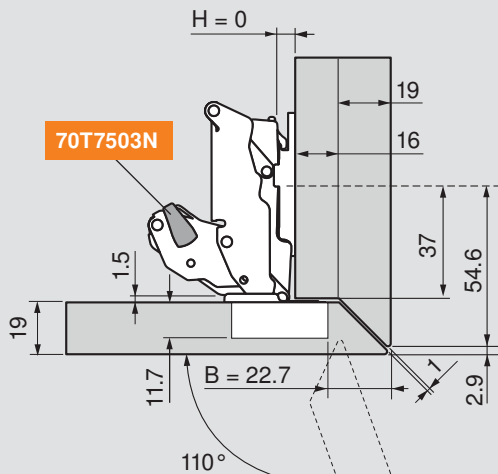
Trial application recommended

Minimum reveal	T = door thickness						
2	28	27	26	25			
	3	4	5	6	7	8	
	B = boring distance						

H	Overlay							
0	19	22	24	26	28	30	32	34
	8	11	13	15	17	19	21	23
	B = boring distance							

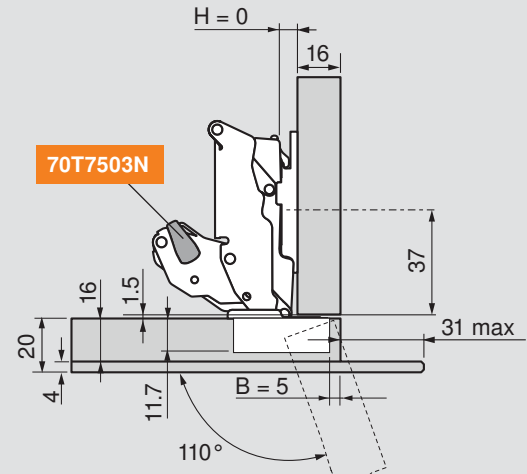
* Minimum reveal is 1 mm on a 25 mm thick door when bored at 8 mm

Mitered door with large overlay



Trial application recommended

Thin facings added to door



Trial application recommended

NOTE: These applications can be achieved in face frame cabinets by blocking out behind the frame

Straight-arm	Self close
Screw-on	71T7500N
Press-in	71T7530N
INSERTA	71T7540N

Angle restriction clips



- For use with 155° hinges only
- Gray nylon

Part no.

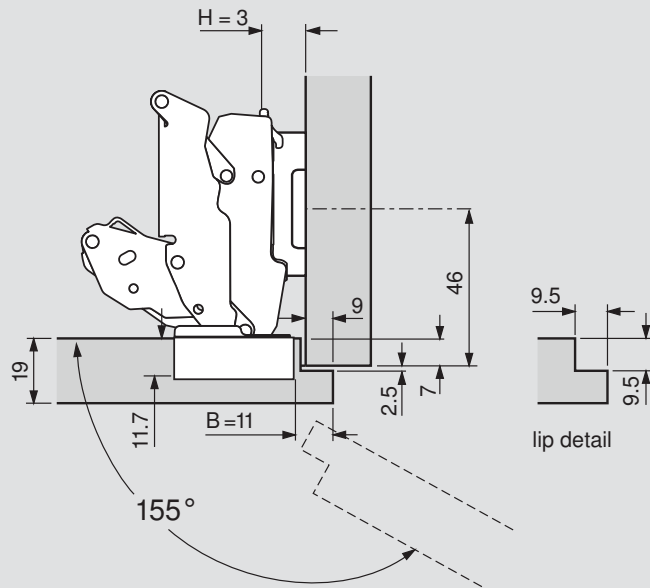
110° restriction clip	70T7503N
92° restriction clip	70T7503N09

Abbreviations

H	= Plate height
P	= Door protrusion
S	= Side arm protrusion
T	= Door thickness
W	= Side panel width

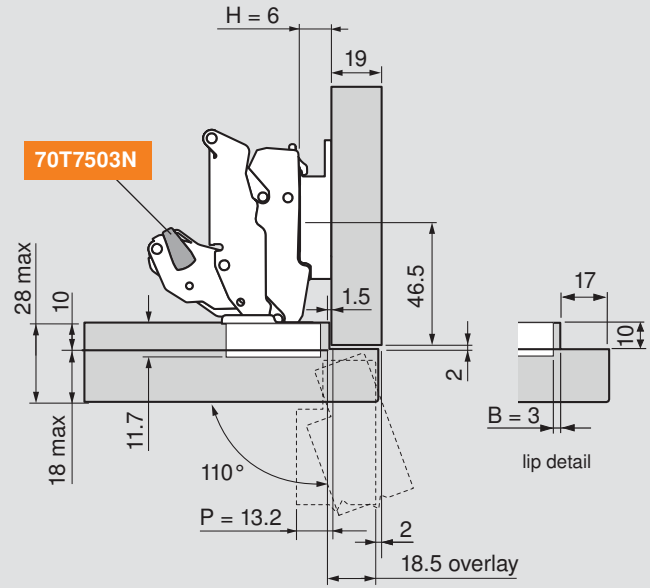


Lip door



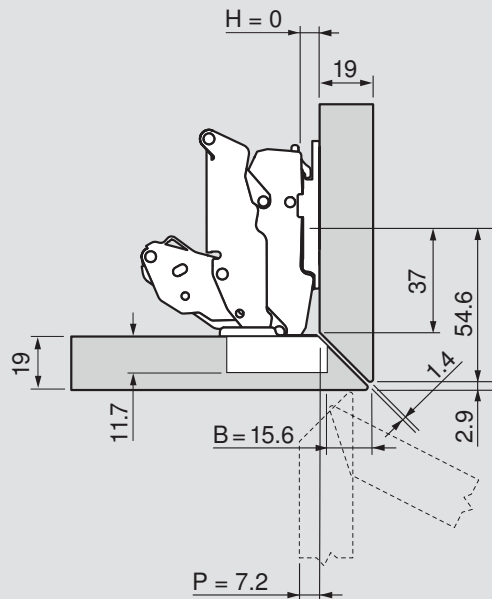
Trial application recommended

Thick lip door



Trial application recommended

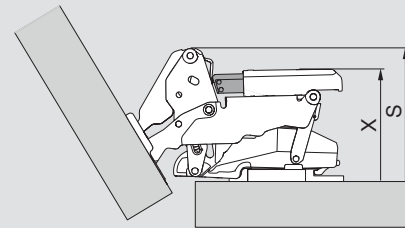
Two-sided and four-sided mitered



Trial application recommended

BLUMOTION for 155° hinges

- CLIP top 155° — straight-arm
- CLIP top 155° — half-cranked



Hinge	X	S
CLIP top 155° straight-arm	53	61
CLIP top 155° half-cranked	63	71
		973A7000

NOTE: These applications can be achieved in face frame cabinets by blocking out behind the frame

Half-cranked	Self close
Screw-on	71T7600N
INSERTA	71T7640N

Angle restriction clips	
	■ For use with 155° hinges only
	■ Gray nylon
	Part no.
110° restriction clip	70T7503N
92° restriction clip	70T7503N09

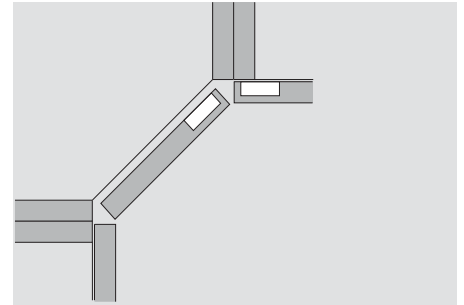
Abbreviations	
H	= Plate height
P	= Door protrusion
S	= Side arm protrusion
T	= Door thickness
W	= Side panel width

CLIP top BLUMOTION diagonal 45° hinge



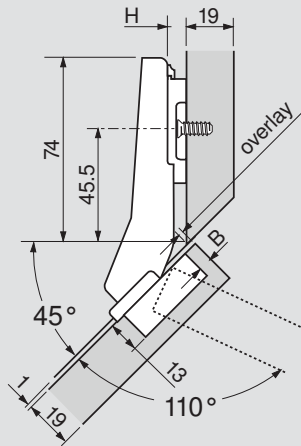
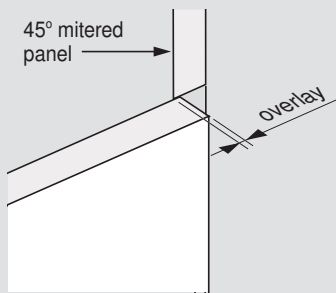
Features

- BLUMOTION soft close integrated into the hinge cup
- Deactivation switch for small / light doors
- 110° opening angle
- INSERTA tool-free attachment only
- COMPATIBLE with existing CLIP mounting plates and hinge arm cover caps

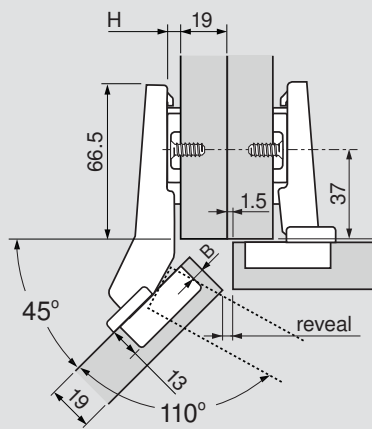
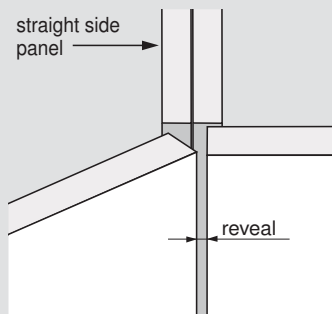


Thickness greater than 19, trial app. recommended.

Overlay application



Inside corner



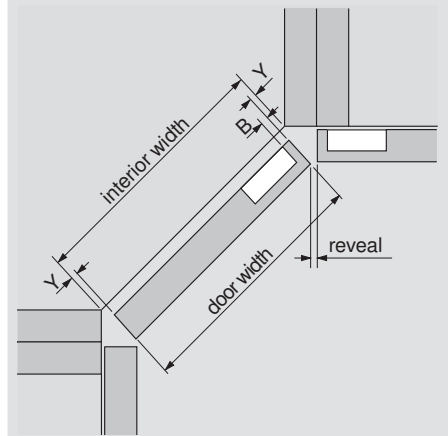
Calculating door width

Step 1. Using the boring distance (B) determined in the reveal table, cross-reference to find the side gap distance (Y) in the table below.

Step 2. Using the following formula to find the door width. Door width = interior width minus (Y x 2).

Example: interior width = 400 mm, side gap (Y) = 4.5 mm.

$$391 = 400 \text{ minus } (4.5 \times 2)$$



H	Overlay			
0	1	2	3	4
	3	4	5	6
B = boring distance				

H	Reveal			
0	6	5	4	3
	3	4	5	6
B = boring distance				
NOTE: Reveal based on 19 (3/4") side panel				

Y = side gap			
5.5	4.5	3.5	2.5
3	4	5	6
B = boring distance			
NOTE: Calculations based on 19 (3/4") door thk.			

Diagonal 45° hinge	Self close
INSERTA	79B3598

Diagonal 45° hinge	Self close
INSERTA	79B3598

Abbreviations	
H	= Plate height
Y	= Side gap

CLIP top BLUMOTION angled hinge program



CLIP top BLUMOTION hinges from +45° to -45°

Angled hinges provide a tremendous array of possibilities for the cabinet design professional. Specifically designed for panel (frameless) cabinets, the system accommodates cabinet front angles from -45° to +45°, in 5° increments. This is achieved by combining any of ten angled hinges, or three standard hinges with a wedge spacer and any of five standard CLIP mounting plates.

All CLIP top BLUMOTION hinges feature "Spiral Tech" depth adjustment which eliminates loosening and retightening the adjustment screws. Also, all CLIP top BLUMOTION angled hinges are INSERTA for tool free hinge-to-door attachment.

Step 1. On page 24, the angle-to-style cross-reference provides an overview of all the angled hinge applications available to assist with your specific application.

Step 2. Once the cabinet front angle is determined, select the row for that angle from the first column. There are five different possibilities for positive angles and two for negative angles.

Step 3. Cross-reference the angle to the style to find the hinge/plate/wedge combination and the specification number. Specifications on pages 25 through 31 are in numerical order and show all the details.

CLIP top BLUMOTION angled hinges

Positive angled hinges

Part no.	Part no.	Part no.	Part no.
+15°	79B9494	+20°	79B9595
		+30° II*	79B9596
			+30° III*
			79B9496

Part no.	Part no.	Part no.	
+45° I*	79B9698	+45° II*	79B3598
		+45° III*	79B9498

* These angled hinges are marked I, II, or III on the hinge arm for differentiation (see photo).

Negative angled hinges

Part no.	Part no.	Part no.
-15°	79B3493	-30°
		79B3491
		-45°
		79B3490

Thick door hinges used in angled applications

Part no.	Part no.	Part no.
95° straight-arm	71B9590	95° half-cranked
		71B9690
		95° full-cranked
		71B9790

Wedge spacers for positive and negative angles

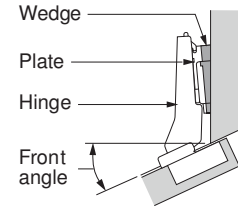
2 mm thickness	4 mm thickness	5 mm thickness	7 mm thickness
Part no.	Part no.	Part no.	Part no.
-5°	171A5500	+5°	171A5010
		+5°	171A5040
		+5°	171A5070

The chart on this page shows the hinge, plate and wedge (or spacer) needed for each angled application. The legend below shows the order of the part numbers.

NOTE: All 35 mm and 8 mm holes must be a minimum of 13 mm deep

Application number

Hinge	CLIP top BLUMOTION hinge	Part number
Plate	CLIP mounting plate	Part number
Wedge/spacer	May or may not be required	Part number

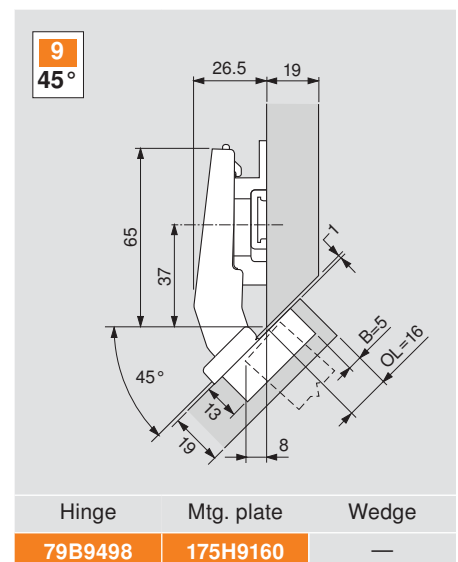
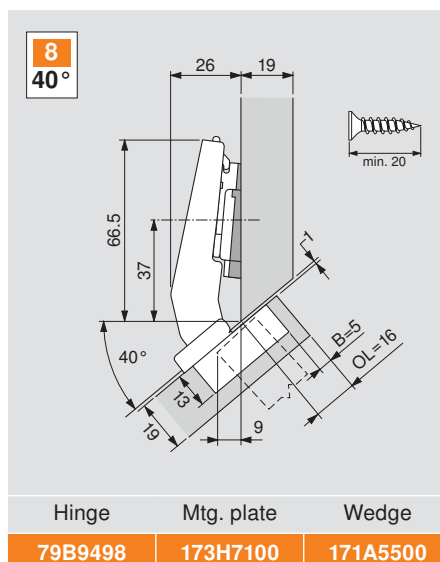
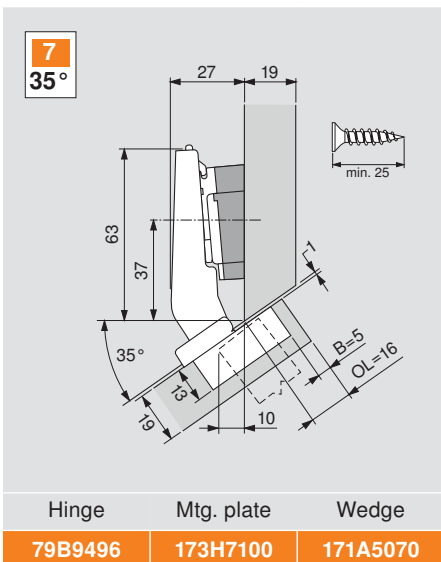
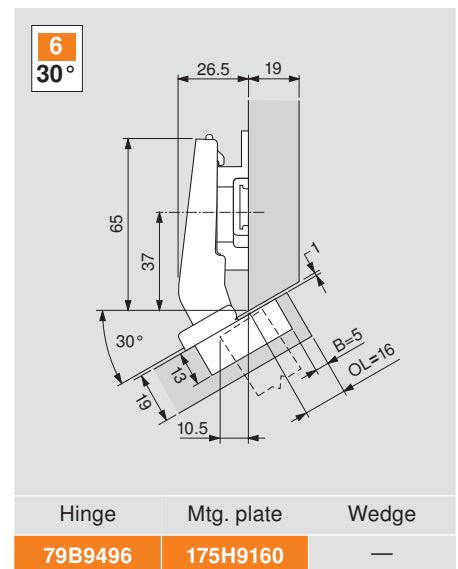
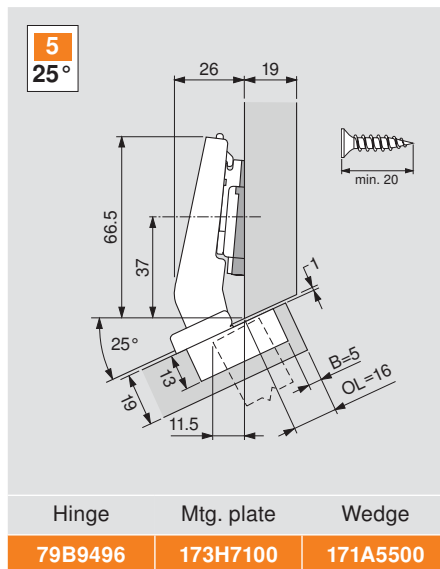
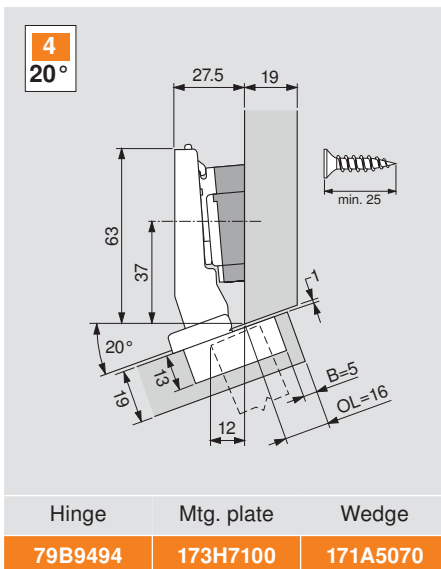
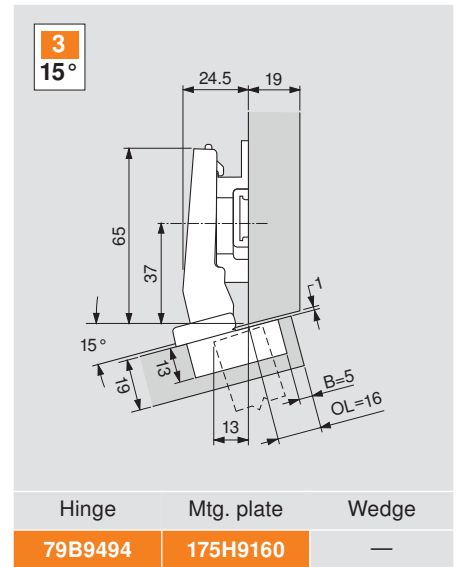
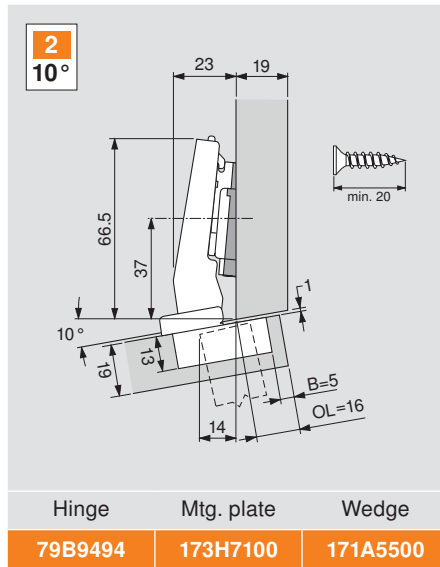
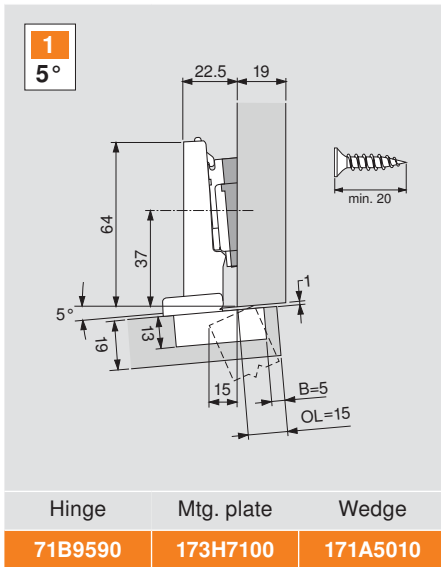


Positive angles					Negative angles			
Maximum overlay	Partial overlay	Corner merge	Inset door	Mitered corner	Maximum overlay	Inset door		
5°	1	10	19	27	-5°	42	51	
	71B9590	71B9590	71B9690	71B9790		71B9590	71B9690	
	173H7100	173H7100	173H7100	173H7100		173H7100	173H7100	
	171A5010	171A5010	171A5070	171A5010		171A5500	171A5500	
10°	2	11	20	28	-10°	43	52	
	79B9494	79B9494	79B9494	79B9494		79B3493	79B3493	
	173H7100	173H7100	175H9190.22	175H9190.22		173H7100	175H7190	
	171A5500	171A5500	171A5500	171A5500	171A5010	171A5010		
15°	3	12	21	29	36	-15°	44	53
	79B9494	79B9494	79B9595	79B9595	79B9595		79B3493	79B3493
	175H9160	175H9190	173H7130	175H9190	173H7100		173H7100	175H9190.22
		171A5500	171A5500	171A5500				
20°	4	13	22	30	37	-20°	45	54
	79B9494	79B9595	79B9595	79B9595	79B9595		79B3493	79B3493
	173H7100	173H7100	175H9190	175H9190.22	175H9160		173H7100	175H9160
	171A5070					171A5500	171A5500	
25°	5	14	23	31	38	-25°	46	55
	79B9496	79B9595	79B9596	79B9596	79B9596		79B3491	79B3491
	173H7100	173H7100	173H7100	175H9190.22	173H7100		173H7100	175H7190
	171A5500	171A5010	171A5500		171A5500	171A5040	171A5070	
30°	6	15	24	32	39	-30°	47	
	79B9496	79B9596	79B9596	79B9596	79B9596		79B3491	
	175H9160	173H7100	175H9190	175H9190.22	173H7130		173H7130	
35°	7	16	25	33	40	-35°	48	
	79B9496	79B9596	79B9596	79B9596	79B9596		79B3491	
	173H7100	173H7100	173H7100	175H9190.22	173H7100		173H7100	
	171A5070	171A5010	171A5070	171A5010	171A5040	171A5500		
40°	8	17		34		-40°	49	
	79B9498	79B9498		79B9698			79B3490	
	173H7100	175H9160		175H9190			173H7100	
	171A5500	171A5500		171A5500		171A5040		
45°	9	18	26	35	41	-45°	50	56
	79B9498	79B3598	79B9698	79B3598	79B9698		79B3490	79B3490
	175H9160	173H7100	173H7100	175H9190.22	173H7100		173H7130	175H7190
							181.6130	

Maximum overlay specifications



Positive angle applications



Partial overlay specifications



Positive angle applications

10
5°

Hinge	Mtg. plate	Wedge
71B9590	173H7100	171A5010

11
10°

Hinge	Mtg. plate	Wedge
79B9494	173H7100	171A5500

12
15°

Hinge	Mtg. plate	Wedge
79B9494	175H9190	—

13
20°

Hinge	Mtg. plate	Wedge
79B9595	173H7100	—

14
25°

Hinge	Mtg. plate	Wedge
79B9595	173H7100	171A5010

15
30°

Hinge	Mtg. plate	Wedge
79B9596	173H7100	—

16
35°

Hinge	Mtg. plate	Wedge
79B9596	173H7100	171A5010

17
40°

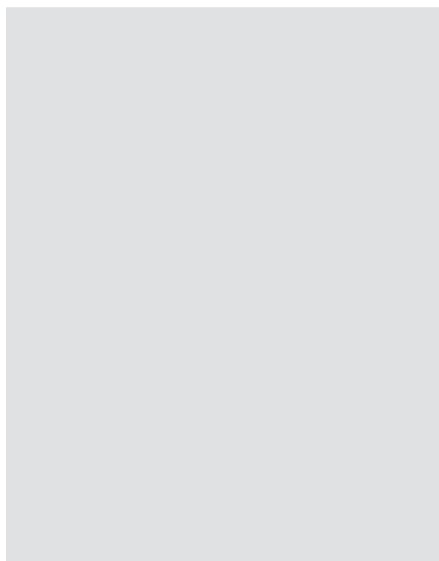
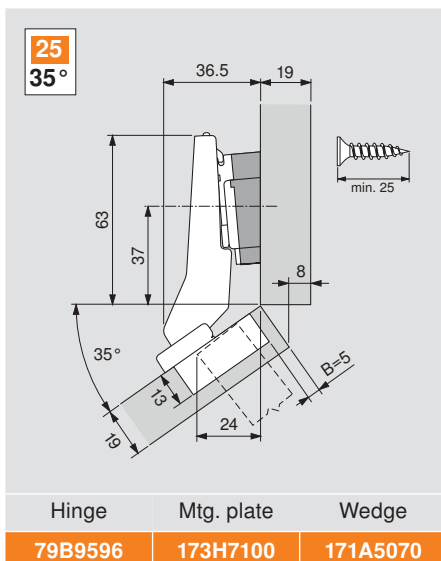
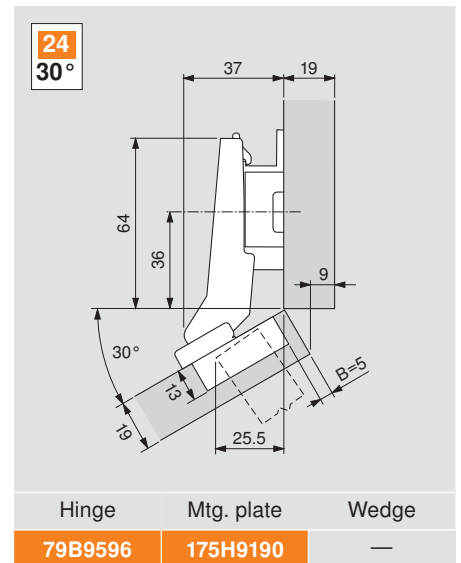
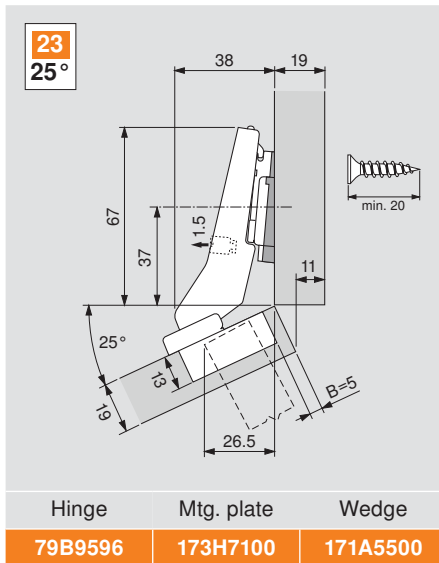
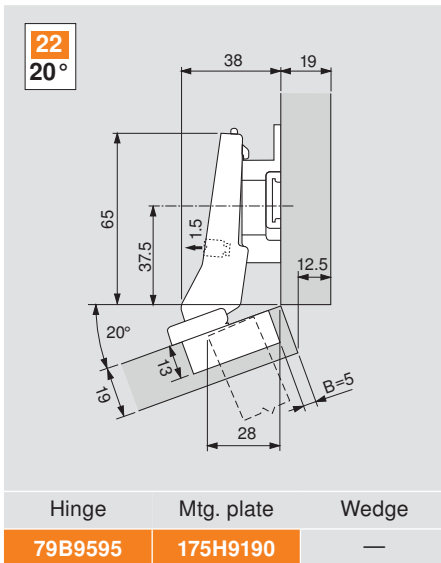
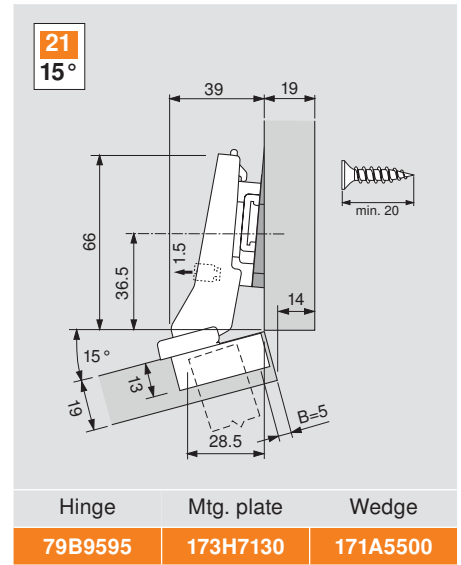
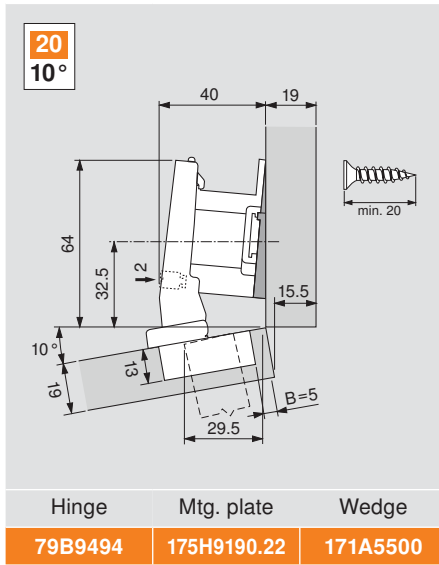
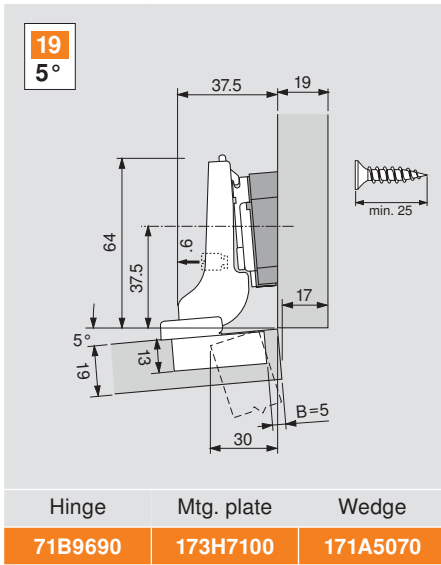
Hinge	Mtg. plate	Wedge
79B9498	175H9160	171A5500

18
45°

Hinge	Mtg. plate	Wedge
79B3598	173H7100	—

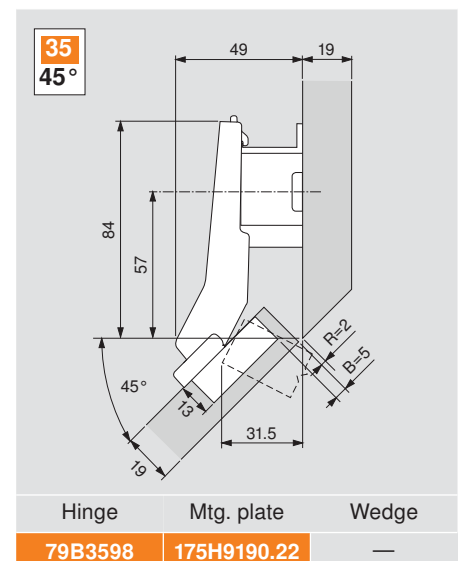
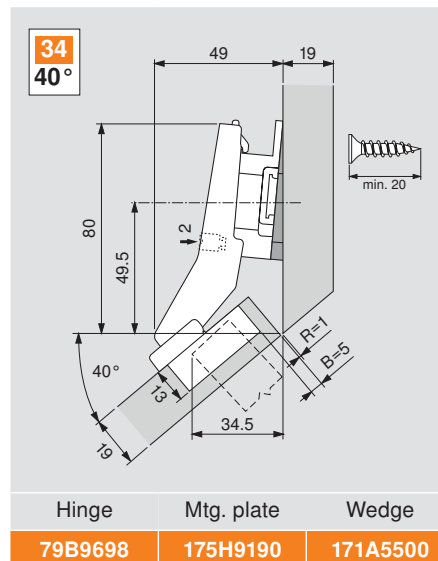
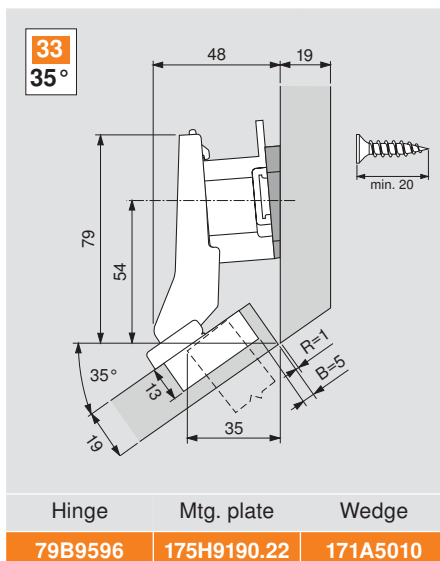
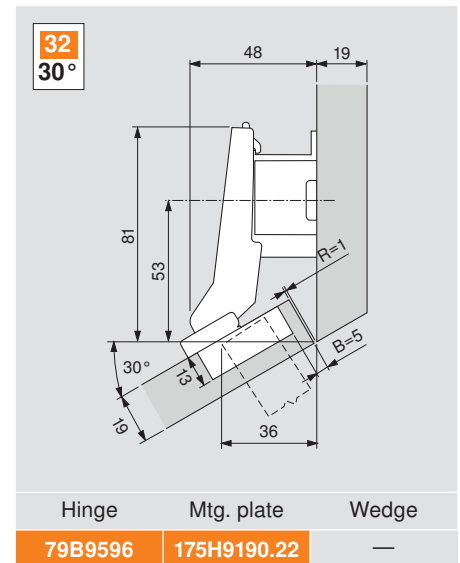
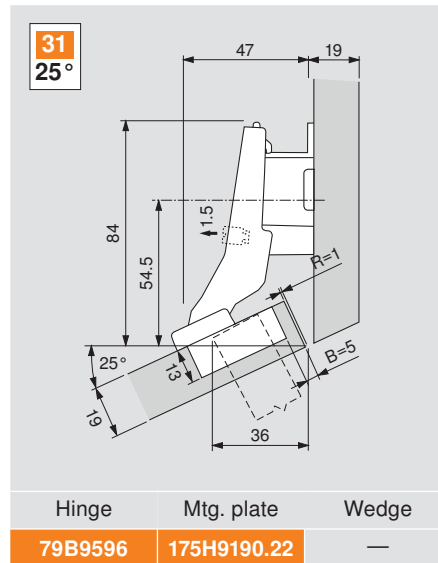
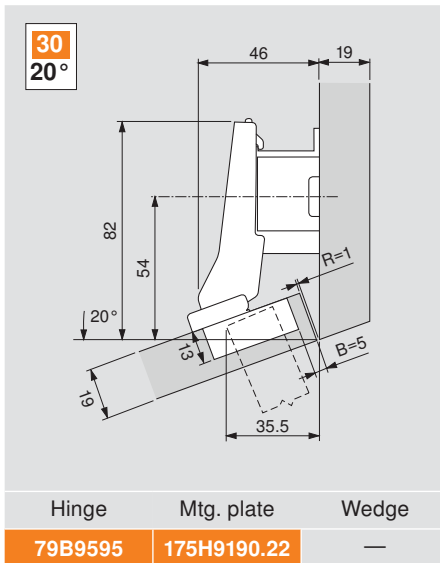
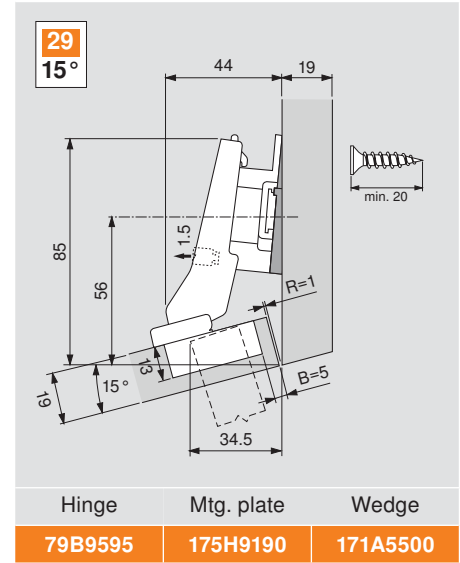
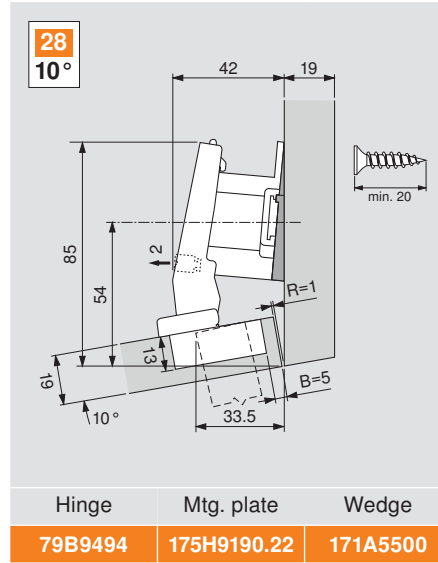
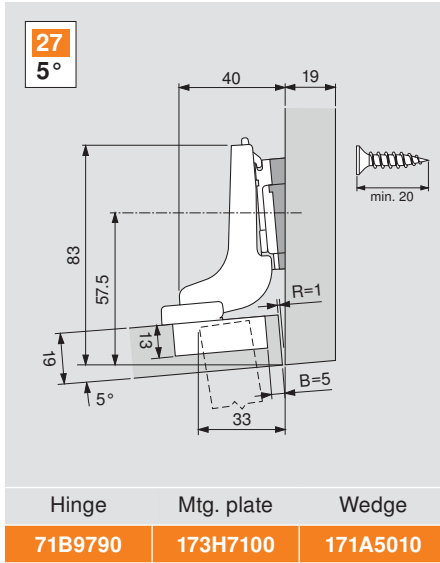
Corner merge specifications

Positive angle applications



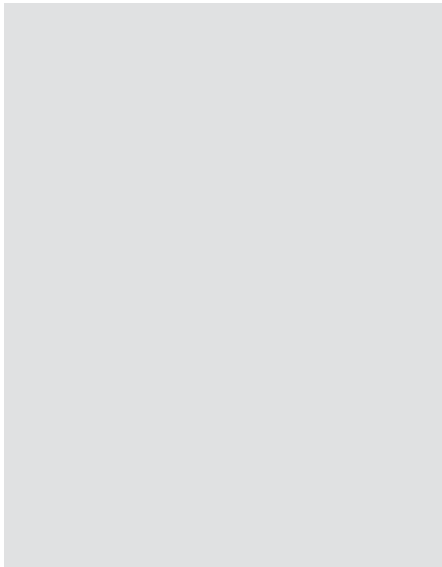
Inset door specifications

Positive angle applications

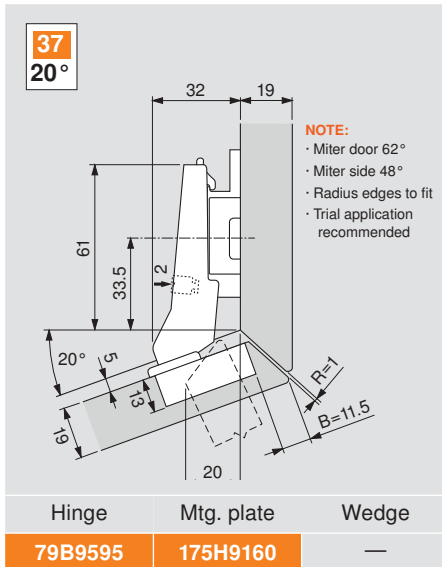


Mitered corner specifications

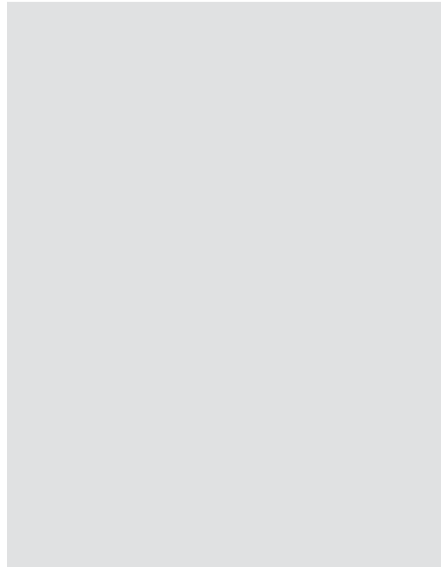
Positive angle applications



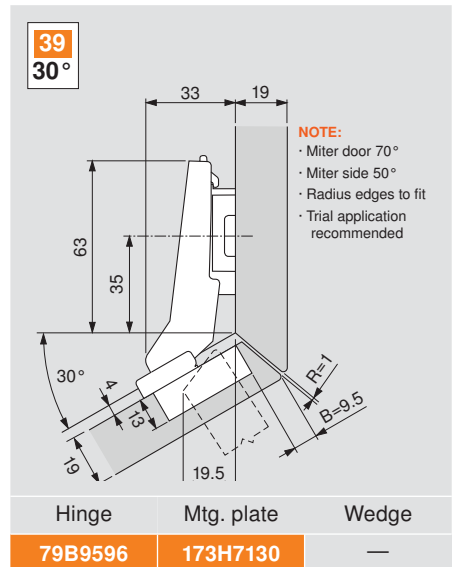
36 15°		
Hinge	Mtg. plate	Wedge
79B9595	173H7100	171A5500



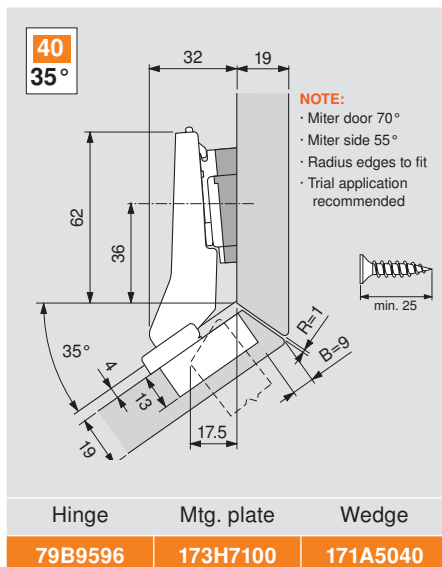
Hinge	Mtg. plate	Wedge
79B9595	175H9160	—



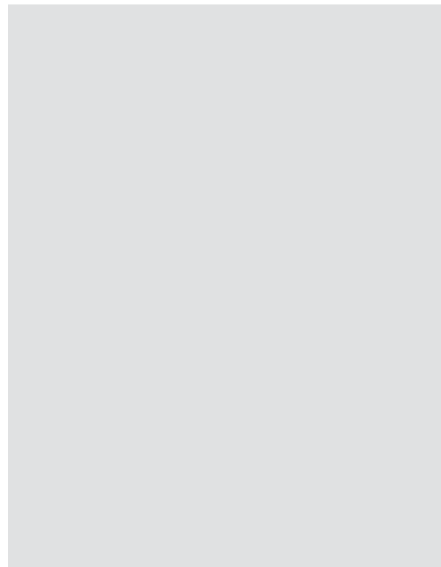
38 25°		
Hinge	Mtg. plate	Wedge
79B9596	173H7100	171A5500



Hinge	Mtg. plate	Wedge
79B9596	173H7130	—



Hinge	Mtg. plate	Wedge
79B9596	173H7100	171A5040

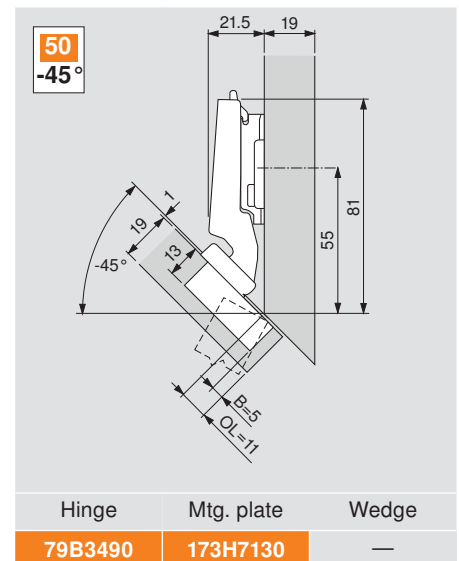
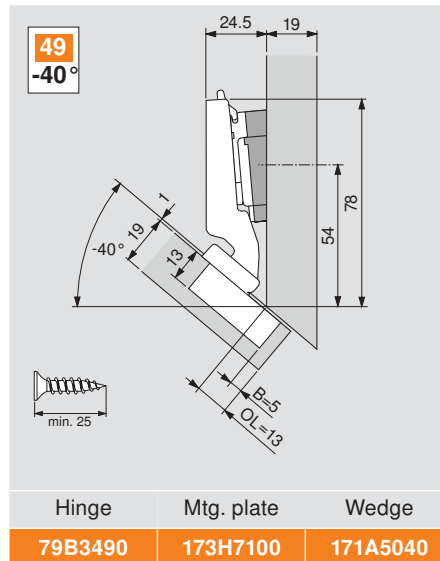
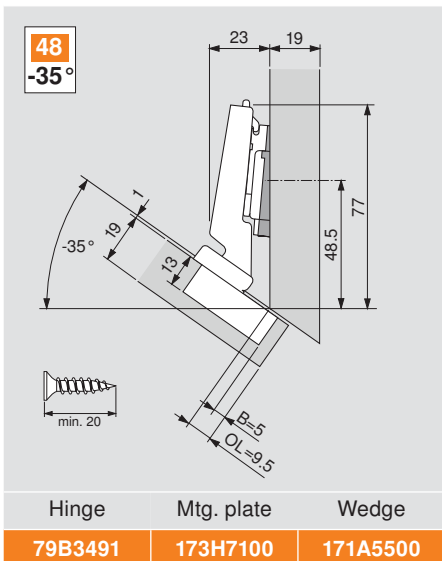
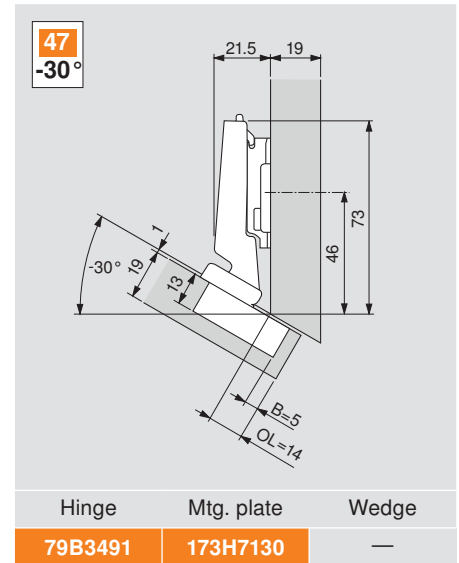
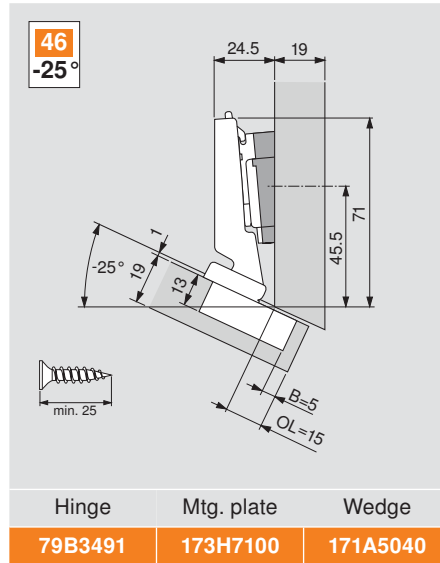
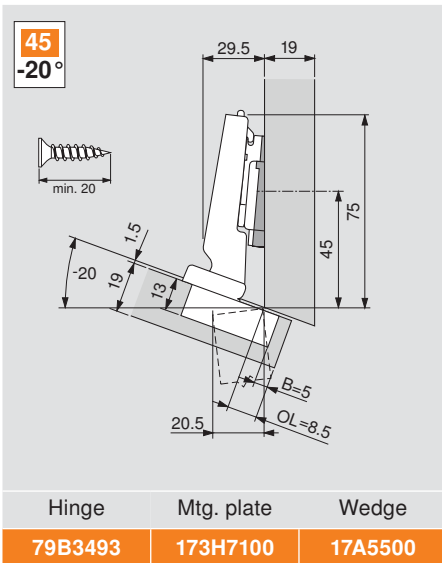
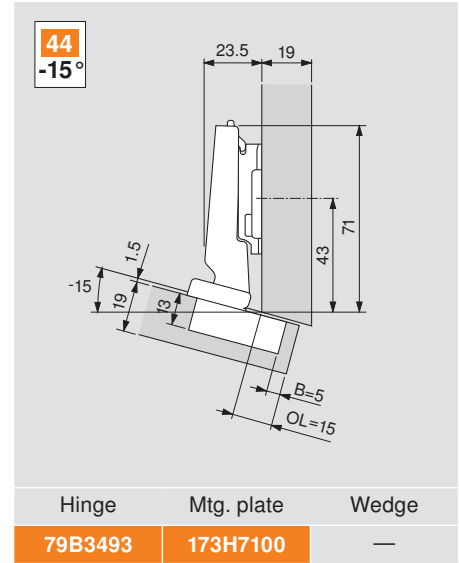
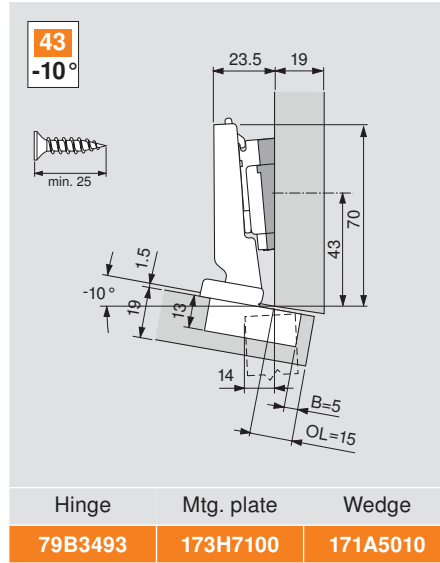
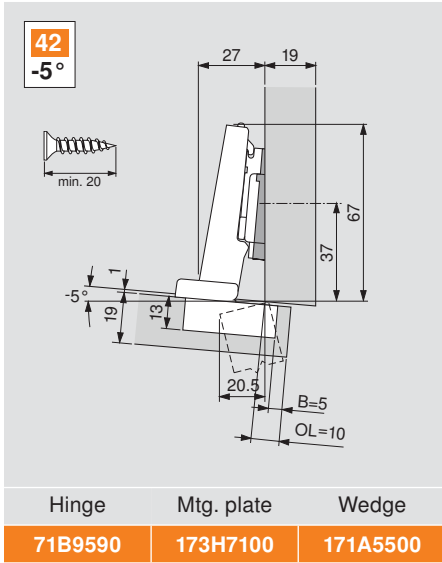


41 45°		
Hinge	Mtg. plate	Wedge
79B9698	173H7100	—

Maximum overlay specifications

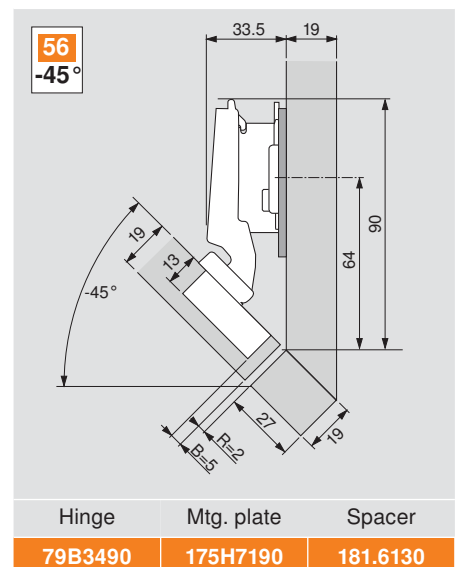
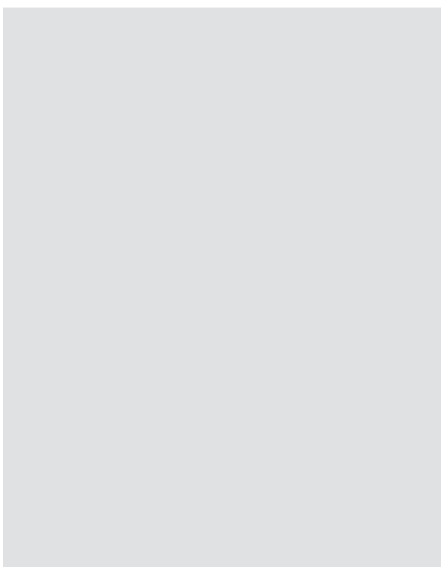
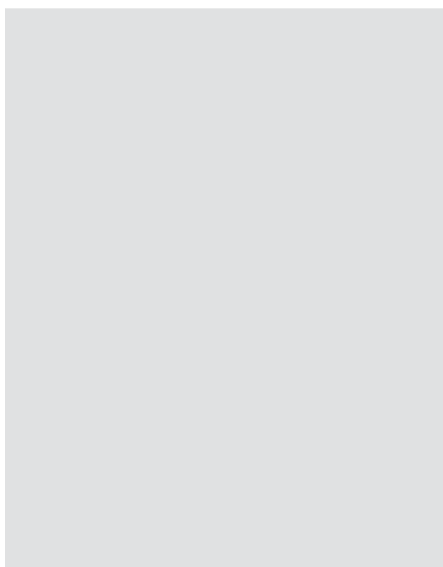
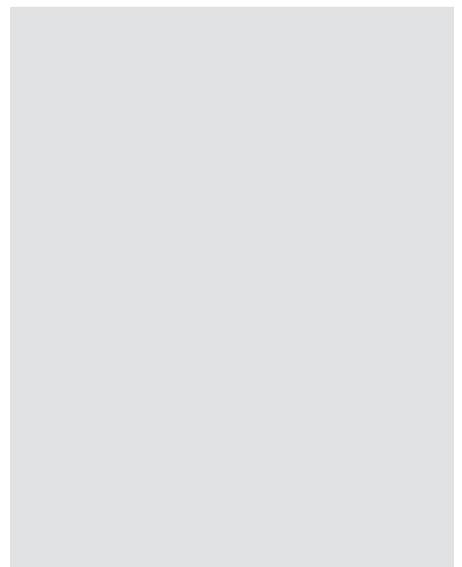
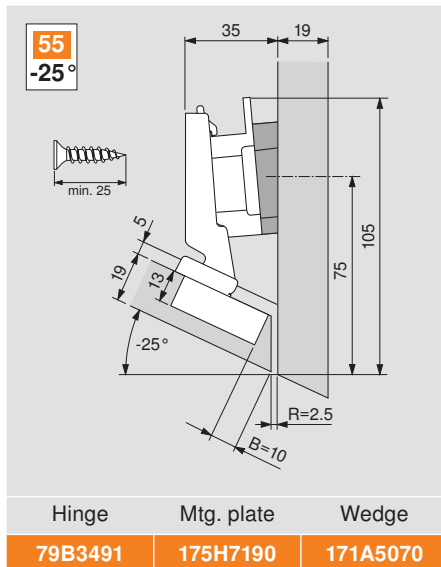
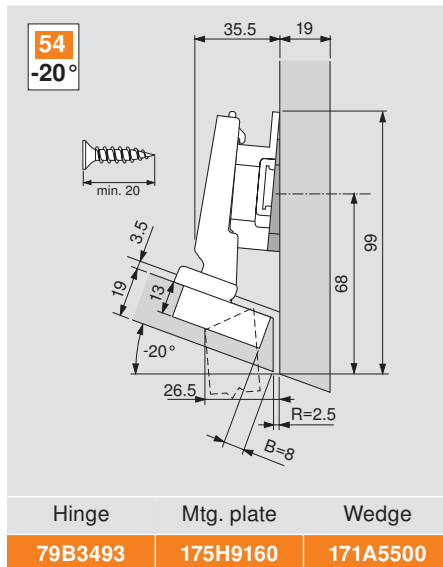
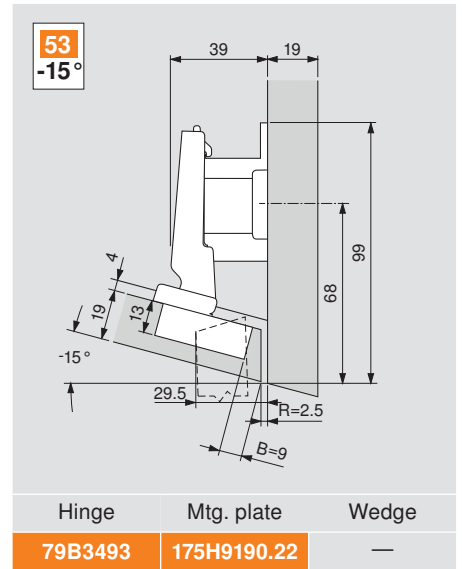
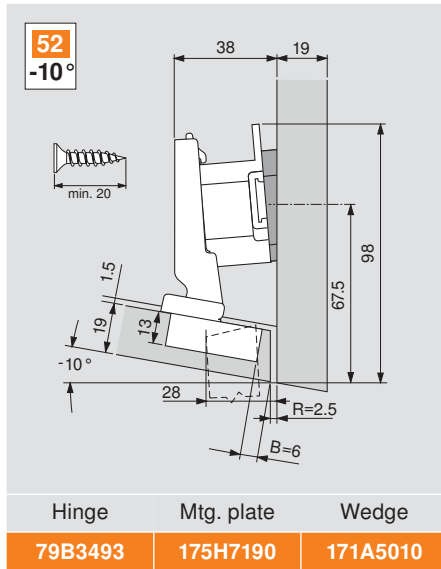
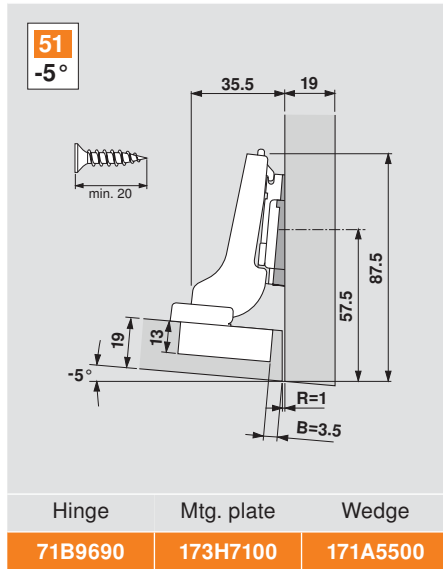


Negative angle applications





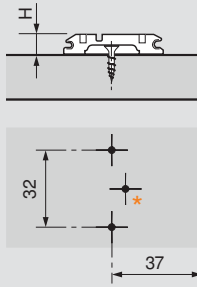
Negative angle applications



CLIP mounting plates

Standard one-piece wing mounting plates

Wood screw



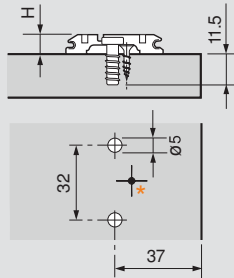
- Steel, nickel-plated
- Attached with #6 x 5/8" wood screws
- Height adjustment ± 3 mm

Part no.

0 plate height (H) **173L6100**

3 plate height (H) **173L6130**

System screw



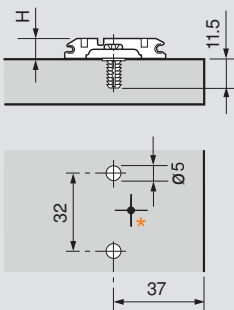
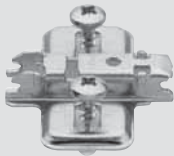
- Steel, nickel-plated
- Attached with pre-mounted Ø5 mm system screws (668.1450.EH)
- Height adjustment ± 3 mm

Part no.

0 plate height (H) **173L8100**

3 plate height (H) **173L8130**

EXPANDO



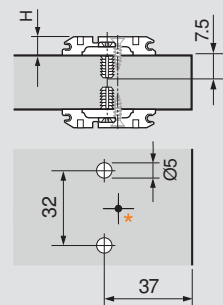
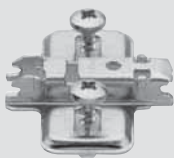
- Steel, nickel-plated
- Attached with pre-mounted screws with EXPANDO dowels (618.1500)
- Height adjustment ± 2 mm

Part no.

0 plate height (H) **174E6100.01**

3 plate height (H) **174E6130.01**

EXPANDO (twin application)

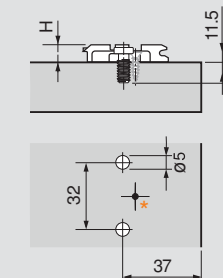


- Steel, nickel-plated
- Attached with pre-mounted screws with EXPANDO dowels for twin application (618.1500)
- Height adjustment ± 2 mm

Part no.

0 plate height (H) **174E610Z**

System screw



- Zinc die-cast, nickel-plated
- Attached with pre-mounted Ø5 mm system screws (668.1450.EH)
- Height adjustment ± 3 mm

Part no.

0 plate height (H) **175L8100**

3 plate height (H) **175L8130**

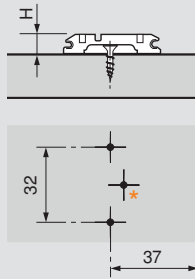
9 plate height (H) **175L8190**

* Add additional wood screw if used with wide angled hinges



Cam adjustable wing mounting plates

Wood screw



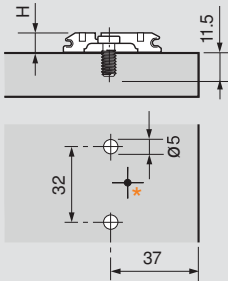
- Steel, nickel-plated
- Attached with #6 x 5/8" wood screws
- Cam height adjustment ± 2 mm

Part no.

0 plate height (H) **173H7100**

3 plate height (H) **173H7130**

System screw



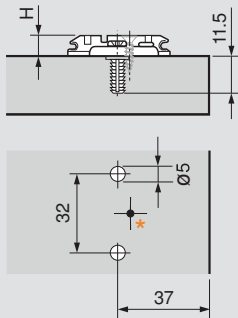
- Steel, nickel-plated
- Attached with #7 x 5/8" wood screws or $\varnothing 5 \times 13$ mm system screws
- Cam height adjustment ± 2 mm

Part no.

0 plate height (H) **173H9100**

3 plate height (H) **173H9130**

EXPANDO



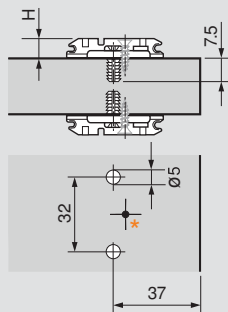
- Steel, nickel-plated
- Attached with pre-mounted screws with EXPANDO dowels (618.1500)
- Cam height adjustment ± 2 mm

Part no.

0 plate height (H) **174H7100E**

3 plate height (H) **174H7130E**

EXPANDO (twin application)

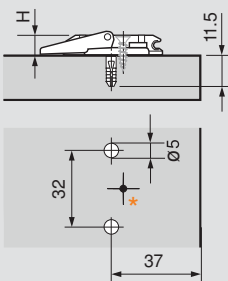


- Steel, nickel-plated
- Attached with pre-mounted screws with EXPANDO dowels for twin application (618.1500)
- Cam height adjustment ± 2 mm

Part no.

0 plate height (H) **174H710ZE**

INSERTA



- Steel (closing lever – zinc die-cast, nickel-plated)
- Tool-free assembly with INSERTA self-anchoring feature
- Cam height adjustment ± 2 mm

Part no.

0 plate height (H) **174H7100I**

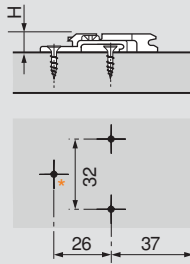
3 plate height (H) **174H7130I**

* Add additional wood screw if used with wide angled hinges

CLIP mounting plates

Standard two-piece wing mounting plates

Wood screw

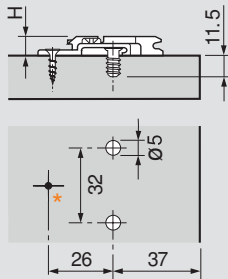
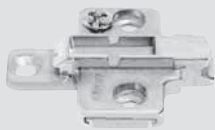


- Zinc die-cast, nickel-plated
- Attached with #6 x 5/8" wood screws
- Height adjustment ± 2 mm

Part no.

0 plate height (H)	175H7100
3 plate height (H)	175H7130
9 plate height (H)	175H7190

System screw



- Zinc die-cast, nickel-plated
- Attached with #7 x 5/8" wood screws or $\varnothing 5 \times 13$ mm system screws
- Height adjustment ± 2 mm

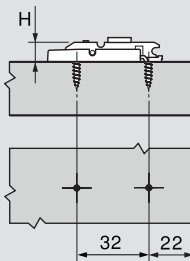
Part no.

0 plate height (H)	175H9100
3 plate height (H)	175H9130
6 plate height (H)	175H9160
9 plate height (H)	175H9190
18 plate height (H)	175H9190.22

* Add additional wood screw if used with wide angled hinges

Cam adjustable In-line mounting plates

Wood screw

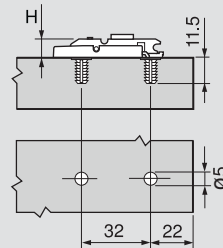
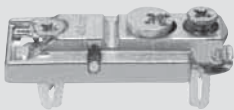


- Zinc die-cast, nickel-plated
- Attached with #6 x 5/8" wood screws
- Cam height adjustment ± 2 mm
- Use of mounting plate template recommended

Part no.

0 plate height (H)	175H5400
--------------------	-----------------

EXPANDO



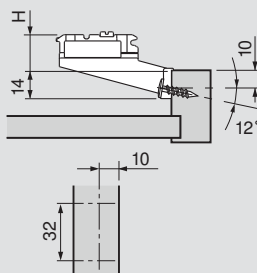
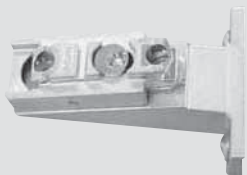
- Zinc die-cast, nickel-plated
- Attached with pre-mounted screws with EXPANDO dowels (618.1500)
- Cam height adjustment ± 2 mm
- Use of mounting plate template recommended

Part no.

0 plate height (H)	177H5400E
--------------------	------------------

Inset face frame adapter

Truss head screw



- Zinc die-cast, nickel-plated
- Attached with #8 x 3/4" truss head screws
- Can be used with applied bead molding
- Cam height adjustment ± 2 mm
- Use with half-cranked hinges only
- 170° hinges not recommended
- **Use of PlateMate required for installation**

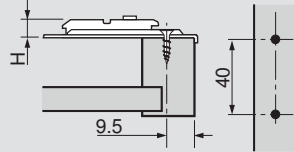
Part no.

9 plate height (H)	175H5030.21
--------------------	--------------------



Face frame adapter plates

Cam adjustable center mount

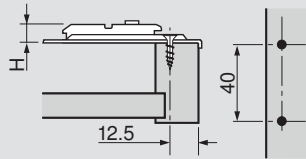


- Steel, zinc die-cast and nickel-plated
- Attached with #7 x 3/4" wood screws
- Center mount 9.5 (3/8")
- Cam height adjustment ± 2 mm
- 175H6000 not for use with INSERTA hinges
- Use of PlateMate recommended

Part no.

0 plate height (H)	175H6000
3 plate height (H)	175H6030
4.5 plate height (H)	175H6040
6 plate height (H)	175H6060

Cam adjustable off-center mount

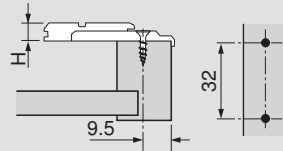
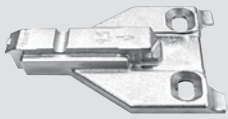


- Steel, zinc die-cast and nickel-plated
- Attached with #7 x 3/4" wood screws
- For use with INSERTA hinge cups
- Off-center mount 12.5 (1/2")
- Cam height adjustment ± 2 mm
- Use of PlateMate recommended

Part no.

0 plate height (H)	175H6600
--------------------	-----------------

Center mount

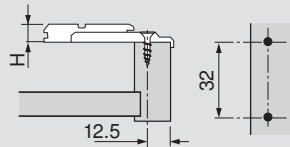
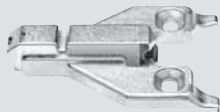


- Zinc die-cast, nickel-plated
- Attached with #7 x 3/4" wood screws
- Center mount 9.5 (3/8")
- Height adjustment ± 2 mm
- Use of PlateMate recommended

Part no.

3 plate height (H)	175L6030.21
--------------------	--------------------

Off-center mount

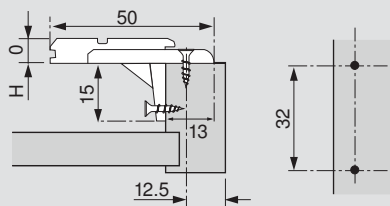


- Zinc die-cast, nickel-plated
- Attached with #7 x 3/4" wood screws
- Off-center mount 12.5 (1/2")
- Height adjustment ± 2 mm
- Use of PlateMate recommended

Part no.

0 plate height (H)	175L6600.22
3 plate height (H)	175L6630.22
6 plate height (H)	175L6660.22

With flange



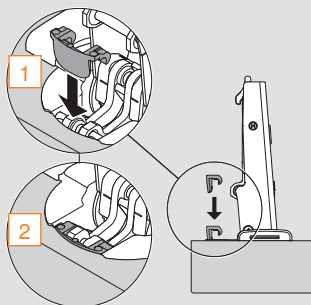
- Recommended when using the 170° and zero protrusion hinges on face frame cabinets
- Zinc die-cast, nickel-plated
- Attached with #7 x 3/4" wood screws
- Off-center mount 12.5 (1/2")
- Height adjustment ± 2 mm
- Use of PlateMate recommended

Part no.

0 plate height (H)	175L6600.24
--------------------	--------------------

Hinge accessories

Angle restriction clip



- Restricts opening angle of the CLIP top BLUMOTION hinge to 86°
- For use with CLIP top BLUMOTION 110° and 110°+ hinges only
- Angle restriction clip can be inserted/removed before or after the hinge has been installed
- Can also be used with CLIP top 110° and 110°+ hinges

Part no.

Angle restriction clip

70T3553

Hinge cup spacer

1.5 mm spacer for use under the hinge cup. For retrofitting existing doors with a cup depth less than 13 mm.



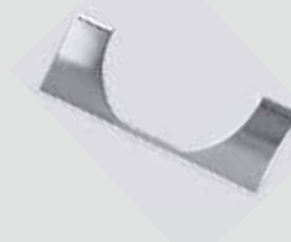
Part no.

Hinge cup spacer

70T3507.21

Hinge cup cover cap

For use with CLIP top BLUMOTION hinges only. Suitable for screw-on, press-in and EXPANDO hinge cups. Can also be used with CLIP top 110° and 110°+ hinges.

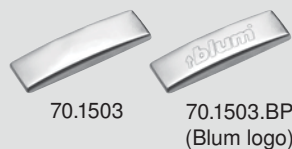


Part no.

Hinge cup cover cap

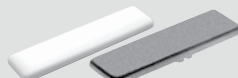
70T3504

Hinge arm cover cap

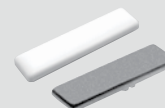


70.1503

70.1503.BP
(Blum logo)



90M2103.01



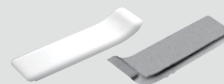
90M2203



70.1663



90M2103.22
(Blum logo)



94M3203



70.7503

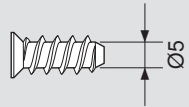
Nylon

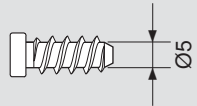
Steel


110°, 110°+, and 95° thick door hinges	Straight-arm	90M2103.01	70.1503
	With Blum logo	90M2103.22	70.1503.BP
	Cranked-arm	94M3203	70.1663
155° hinges	Specialty hinges		70.7503
45°, blind corner and narrow aluminum door hinges	Specialty hinges	90M2103.01	70.1503
Angled hinges	Straight-arm	90M2203	70.1503




NOTE: Custom logo available in black or white nylon or nickel-plated steel cover caps.


Deep thread wood screw	
	
	Part no.
#6 x 1/2", #2 Phillips	6062N
#6 x 5/8", #2 Phillips	606N
#6 x 5/8", #2 POZI	606P
#6 x 3/4", #2 Phillips	6064N
#7 x 5/8", #2 Phillips	707N
#7 x 3/4", #2 Phillips	7074N

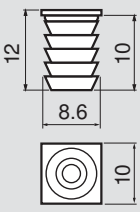
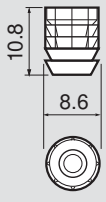
Deep thread system screw	
Pilot bore $\varnothing 5$ (3/16") hole	
	
	Part no.
#7 x 10 mm, #2 POZI	661.1000.HG
#7 x 11.5 mm, #2 POZI	661.1150.HG
#7 x 13 mm, #2 POZI	661.1300.HG
#7 x 14.5 mm, #2 POZI	661.1450.HG
#7 x 20 mm, #2 POZI	661.2000.HG
#7 x 25 mm, #2 POZI	661.2500.HG

Pan head system screw	
Pilot bore $\varnothing 5$ (3/16") hole	
	
	Part no.
#7 x 14.5 mm, #2 POZI	668.1450.EH

Truss and pan head screw	
	
	Part no.
#8 x 3/4", #2 Phillips	834TH

POZI DRIVER and bits	
	
A POZI screwdriver (different from Phillips) is the most crucial tool you can use to assure that full torque is applied to all Blum mounting screws. POZI screws can be identified by the distinctive "tick" marks located in the center of the screw head recess.	
<div style="display: flex; justify-content: space-around;"> <div style="text-align: center;">  <p>POZI</p> </div> <div style="text-align: center;">  <p>Phillips</p> </div> </div> <p style="text-align: center;">Tick marks</p>	
	Part no.
#2 POZI DRIVER	POZI DRIVER
1/4" Magnetic bit holder	BIT HOLDER
#2 x 1" POZI bit insert	POZI BIT #2x1
#2 x 2" POZI bit insert	POZI BIT #2x2

Twin application screw	
Pre-bored $\varnothing 5$ (3/16") hole	
	
	Part no.
14 (9/16") screw	612.2010
20 (25/32") sleeve	612.2020
24 (15/16") sleeve	612.2420

$\varnothing 8$ mm dowels			
			
Square head dowel for attaching to hinges		Round dowel for insertion into doors	
	Part no.		Part no.
$\varnothing 8$ mm square dowel	70T5582.01	$\varnothing 8$ mm round dowel	70.0532
Installation screw	608.1200	Installation screw	608.1200

Assembly aids

Knock-in tool



Can be used to insert all Blum press-in hinges

Part no.

Knock-in tool

ZME.0710

Euro insertion ram

Can be used for inserting all Blum press-in Euro hinges



Part no.

Euro insertion ram

MZM.0040

CLIP top insertion ram

Can be used for inserting CLIP top BLUMOTION and CLIP top hinges.



NOTE: Not for use with CLIP top BLUMOTION and CLIP top 95°, 100°, and wide angle hinges.

Part no.

CLIP top insertion ram

MZM.0010.01

Machine drill bits



Ø5 mm



Ø8 mm



Ø10 mm



Ø35 mm

Part no.

Ø5 mm drill bit (RH)

M01.ZB05.D2 R

Ø5 mm drill bit (LH)

M01.ZB05.D3 L

Ø8 mm drill bit (LH)

M01.ZB08.03 L

Ø10 mm drill bit (RH)

M01.ZB10.02 R

Ø10 mm drill bit (LH)

M01.ZB10.03 L

Ø20 mm drill bit (RH)

M01.ZB20.02 R

Twist drill bits — high speed steel



VPB-5



Twist drill bit



*Chuck for DB-2mm

Part no.

VPB-5 centering bit

VPB-5

Ø2 mm left

DB-2mm

Ø2.5 mm right

DB-2.5mm

Ø5 mm right

DB-5mm

Ø8 mm right

DB-8mm

Ø10 mm right


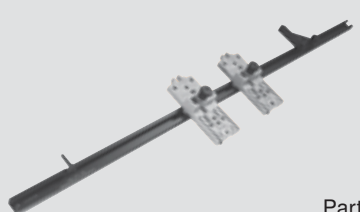

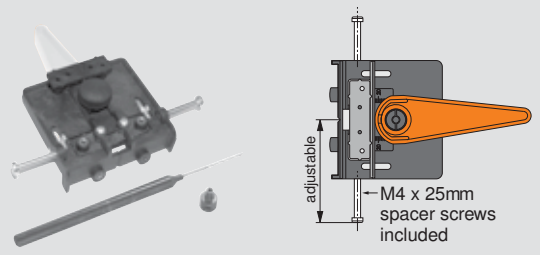

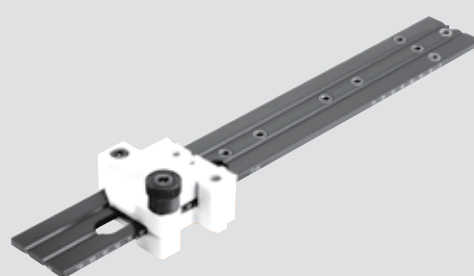
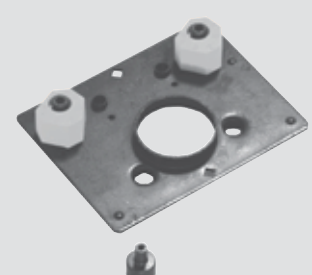
DB-10mm

Ø10 mm chuck for DB-2mm

DB-10 x 2mm

*Use to pilot bore for screw-on hinges with MINIPRESS or MINIDRILL

Templates

<p>ECODRILL</p> <p>Pre-bores doors for Blum hinges</p>  <p>Part no.</p> <p>ECODRILL M31.1000</p>	<p>QUICKFIX</p> <p>Locates and matches positions of hinges and plates on cabinets and doors</p>  <p>Part no.</p> <p>QUICKFIX 65.7500.02</p>	<p>Mounting plate template</p> <p>Use to mark screw locations for Blum mounting plates</p>  <p>Part no.</p> <p>Template 65.5310</p>
<p>PLATEMATE</p> <p>Boring template for all Blum face frame adapter plates</p>  <p>adjustable M4 x 25mm spacer screws included</p> <p>Part no.</p> <p>PLATEMATE 65.5030.01</p>	<p>ECOJIG</p> <p>Used to bore Ø5 mm holes for mounting plates that are mounted with system screws, EXPANDO dowels or INSERTA</p>  <p>Part no.</p> <p>ECOJIG 65.5070</p>	
<p>Universal individual template</p>  <ul style="list-style-type: none"> ■ For pre-boring mounting plates ■ Also used for marking and pre-boring cabinet profiles, BLUMOTION, TIP-ON adapter plates and AVENTOS locating pins ■ Calibrated scale for accurate setting <p>Set includes:</p> <ul style="list-style-type: none"> ■ Universal individual template ■ Ø2.5 mm and Ø5 mm stop collars ■ Allen wrench <p>Part no.</p> <p>Universal individual template 65.1051.01</p>		
<p>INSERTA boring template</p>  <ul style="list-style-type: none"> ■ Used for installing Blum hinges with INSERTA or EXPANDO ■ For boring Ø8 mm dowel holes after Ø35 mm hole is bored ■ Boring distance adjusts from 2 mm to 8 mm ■ Also bores Ø5 mm holes for system screw mounting plates ■ Includes drill stop collar to pilot bore Ø2.5 mm for screw-on plates <p>Part no.</p> <p>INSERTA boring template 65.0590</p>		

Assembly aids

Machines

MINIPRESS P — Deluxe boring and insertion machine



- Front adjustable boring distance with digital counter
- Pneumatic hold-down clamps
- Boring depth adjustment
- Ruler stops (qty 4)
- Tool kit included
- Dust collection attachment
- Optional laser center line set
- Accepts new 8 or 9 spindle heads

Part no.

Single phase — 220V power

M53.1053*US

Three-phase — 220V power

M53.1004*US

MINIPRESS M — 110V manual boring and insertion machine



- V110 power with molding plug (portable)
- Does not require pressurized air
- Ruler stops (qty 4)
- Tool kit included
- Dust collection attachment
- Accepts new 8 or 9 spindle heads

Part no.

Single phase — 110V power

M52.1056*US

MINIDRILL P — Standard boring machine



- Front adjustable boring distance
- Ruler stops (qty 4)
- Tool kit included
- Dust collection attachment
- Optional laser center line, digital counter and hold down clamps sets
- Accepts new 8 or 9 spindle heads

Part no.

Single phase — 220V power

M53.1053*50

Machine accessories

9 spindle head



- 9 spindle head for use with MINIPRESS/MINIDRILL
- Bores nine holes spaced 32 mm apart, parallel to the fence
- New feature — quick-disconnect chucks
- Once aligned, does not require additional adjustment
- Bores cabinet side panel for 32 mm system boring for Blum mounting plates and runners
- Requires retrofit set for use with machines produced in 2009 or prior

Includes:

- Ø3 mm allen wrench
- Distance spacer
- Drive pin
- Air hose

Part no.

9 spindle head	MZK.190S
Chuck cover cap	M30.1329

8 spindle head



- 8 spindle head for use with MINIPRESS/MINIDRILL
- Bores eight holes spaced 32 mm apart, perpendicular to the fence
- New feature — quick-disconnect chucks
- Once aligned, does not require additional adjustment
- Bores all METABOX, TANDEMBOX and TANDEMBOX intivo front fixing brackets and galleries
- Bores cabinet side panels for all Blum runner systems
- Requires retrofit set for use with machines produced in 2009 or prior

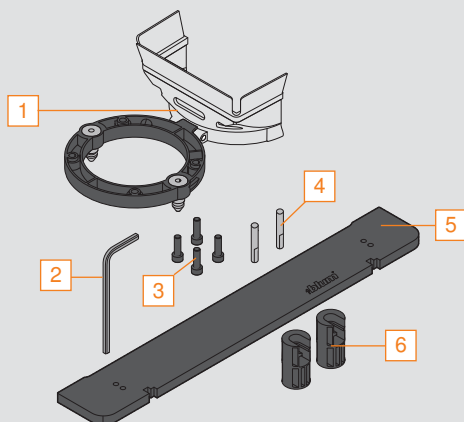
Includes:

- Ø3 mm allen wrench
- Distance spacer
- Drive pin
- Air hose

Part no.

8 spindle head	MZK.880S
Chuck cover cap	M30.1329

Spindle head retrofit set



- Required for attachment of 9 and 8 spindle heads to MINIPRESS/MINIDRILL produced in 2009 and prior
- Previous boring heads MZK.1000.US and MZK.8000.US cannot be used with the retrofit set

Set includes:

- 1 Adapter ring and shield
- 2 Ø5 mm allen wrench
- 3 Mounting bolts (qty 4)
- 4 Alignment pins (qty 2)
- 5 Alignment template
- 6 13 mm fixed depth stop (qty 2)

Part no.

Spindle head retrofit set	M30.1313.JM
---------------------------	--------------------

Part number index

Part no.	Page no.	Part no.	Page no.	Part no.	Page no.
171A5010	23	661.1150.HG	37	79B9580	16
171A5040	23	661.1300.HG	37	79B9590	16
171A5070	23	661.1450.HG	37	79B9595	23
171A5500	23	661.2000.HG	37	79B9596	23
173L6100	32	661.2500.HG	37	79B9698	23
173L6130	32	668.1450.EH	37	79B9980	17
173L8100	32	70.0532	37	834TH	37
173L8130	32	70.1503.BP	36	90M2103.01	36
173H7100	33	70.1503	36	90M2103.22	36
173H7130	33	70.1663	36	90M2203	36
173H9100	33	70.7503	36	94M3203	36
173H9130	33	7074N	37	973A7000	18
174E6100.01	32	707N	37	BIT HOLDER	37
174E6130.01	32	70T3504	36	DB-2mm	38
174E610Z	32	70T3507.21	36	DB-2.5mm	38
174H7100E	33	70T3553	36	DB-5mm	38
174H7100I	33	70T5582.01	37	DB-8mm	38
174H710ZE	33	70T5582.01	37	DB-10mm	38
174H7130E	33	70T5582.01	37	DB-10 x 2mm	38
174H7130I	33	70T5582.01	37	M01.ZB05.D2 R	38
175H5030.21	34	70T5582.01	37	M01.ZB05.D3 L	38
175H5400	34	70T7503N	18	M01.ZB08.03 L	38
175H6000	35	70T7503N09	18	M01.ZB10.02 R	38
175H6030	35	71B3550	10	M01.ZB10.03 L	38
175H6040	35	71B3580	10	M01.ZB20.02 R	38
175H6060	35	71B358E	10	M01.ZB35.02 R	38
175H6600	35	71B3590	10	M30.1313.UM	41
175H7100	34	71B3650	10	M30.1329	41
175H7130	34	71B3680	10	M31.1000	39
175H7190	34	71B3690	10	M52.1056*US	40
175H9100	34	71B3750	10	M53.1004*US	40
175H9130	34	71B3780	10	M53.1053*50	40
175H9160	34	71B3790	10	M53.1053*US	40
175H9190	34	71B950A	15	MZK.190S	41
175H9190.22	34	71B9550	14	MZK.880S	41
175L6030.21	35	71B9580	14	MZM.0010.01	38
175L6600.22	35	71B9590	14	MZM.0040	38
175L6600.24	35	71B9650	14	POZI BIT #2x1	37
175L6630.22	35	71B9680	14	POZI BIT #2x2	37
175L6660.22	35	71B9690	14	POZI DRIVER	37
175L8100	32	71B9750	14	VPB-5	38
175L8130	32	71B9780	14	ZME.0710	38
175L8190	32	71B9790	14		
177H5400E	34	71T7500N	18		
181.6130	24	71T7530N	18		
6062N	37	71T7540N	18		
6064N	37	71T7600N	20		
606N	37	71T7640N	20		
606P	37	73B3550	12		
608.1200	37	73B3580	12		
612.2010	37	73B358E	12		
612.2020	37	73B3590	12		
612.2420	37	79B3490	23		
65.0590	39	79B3491	23		
65.1051.01	39	79B3493	23		
65.5030.01	39	79B3598	21, 23		
65.5070	39	79B9494	23		
65.5310	39	79B9496	23		
65.7500.02	39	79B9498	23		
661.1000.HG	37	79B9550	16		



Why choose Blum

Blum, Inc. is a leading manufacturer of functional hardware for the kitchen cabinet and commercial casework industries specializing in lift systems, concealed hinges and drawer runner systems. Virtually all of the hardware needed to assemble and make cabinets functional is available within the wide range of quality Blum products. Blum supports the U.S. market with a network of more than 150 dependable distributors, 40+ knowledgeable Blum sales representatives and an experienced customer service department.

Commitment to manufacturing in the U.S.

Blum manufactures many of its products in our 450,000 sq ft manufacturing, logistics and warehouse facility located in Stanley, North Carolina. Manufacturing closer to the customer allows Blum to react quickly to changing customer needs including unexpected surges in demand. Customer pickups and deliveries can be timed to better match their production schedules. Blum is committed to manufacturing in the U.S. for the U.S. market.



Product development at Blum considers all of the various customers who will come in contact with our products. With this “Global Customer Benefits” philosophy we strive to create advantages for all users.



Blum, Inc. is ISO 9001 certified which means that you are assured of consistent quality in every Blum product. What's more they exceed the requirements of ANSI/BHMA standards for cycle life, static load and self-closing performance.

Please visit blum.com for information on other Blum products.
LIT.HNG1100.07.12 © 2012 Printed in USA

 **larkandlarks.co.uk**
online kitchen & bedroom store
See website for details. Help line: 0845 017 6480

